

Digital Patterns



Designed by Steve Good

www.scrollsawworkshop.blogspot.com

Home of Scroll Saw Pattern Printer
and the Scroll Saw Key Chain Printer



Note to commercial print employees: I give my permission to print as many of this pattern book as your customer requires.

The Goblet



Steve Good



Lay out all the pattern pieces on the wood of your choice.



Make all the 90 degree cuts.



There are three rings that require angled cuts. Drill at the listed angle.



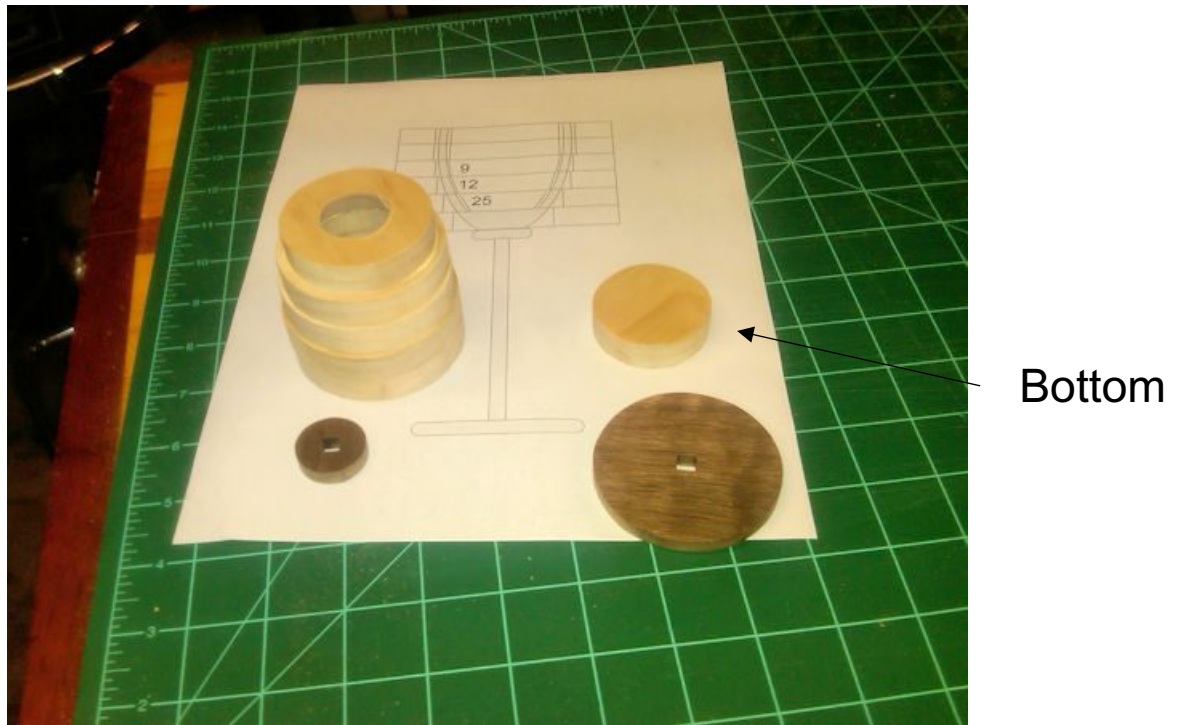
Set the table to the listed angle and make the interior cuts.



All the pieces are cut and ready for assembly.



Stack and glue the rings in the correct order.



Do not glue on the bottom until you have the interior of the cup sanded. This gives better access to the interior.

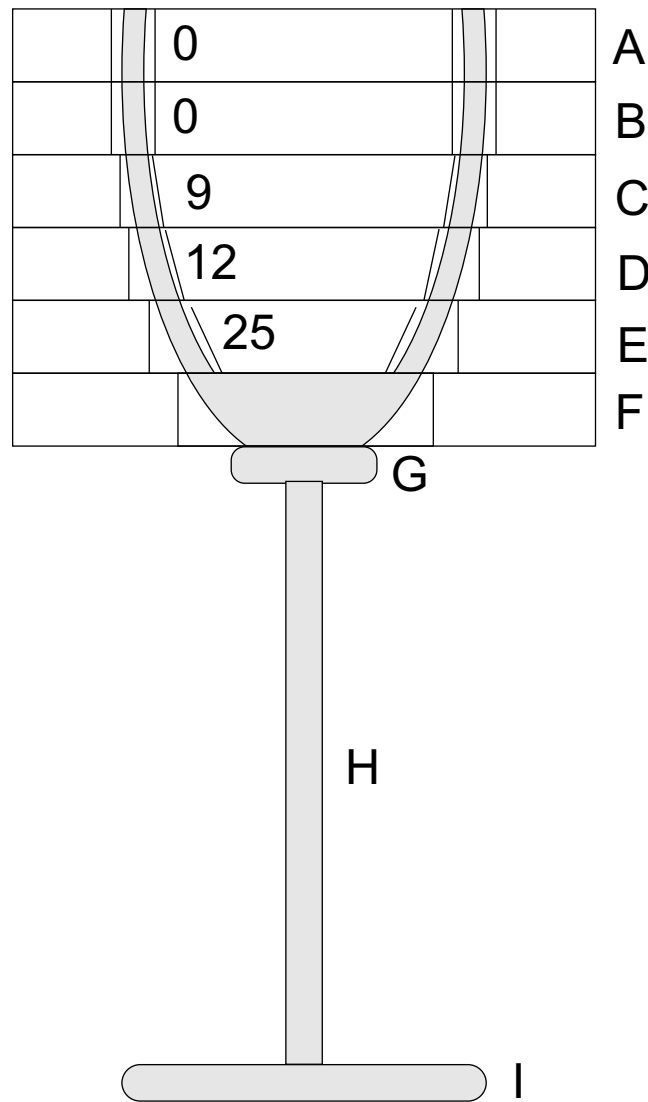


Sand the interior smooth. Start to shape the exterior of the cup. Glue on the bottom and continue shaping.

Assemble the stem and glue all the pieces together.

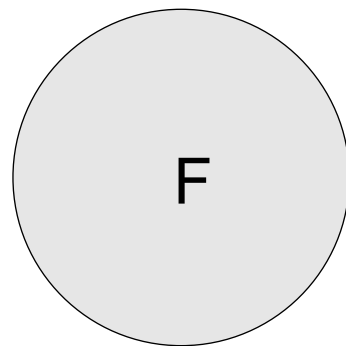
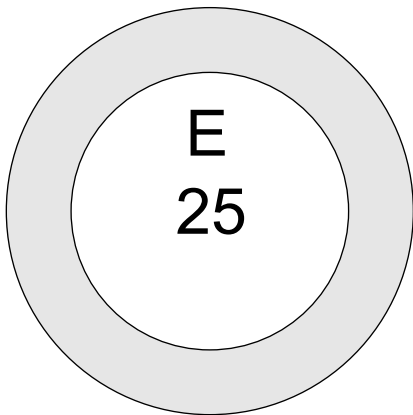
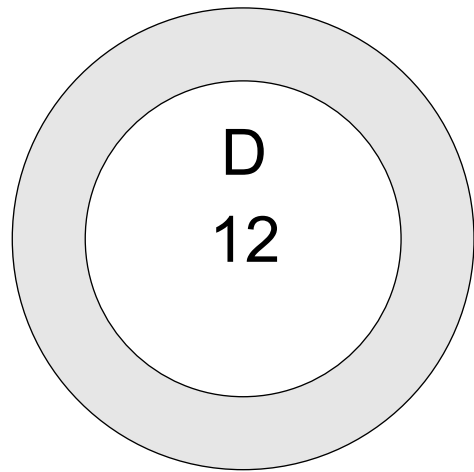
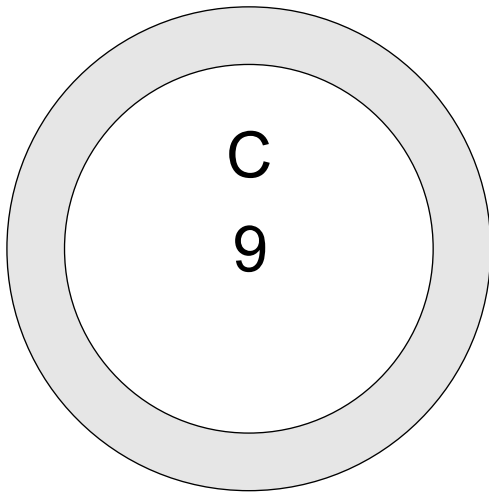
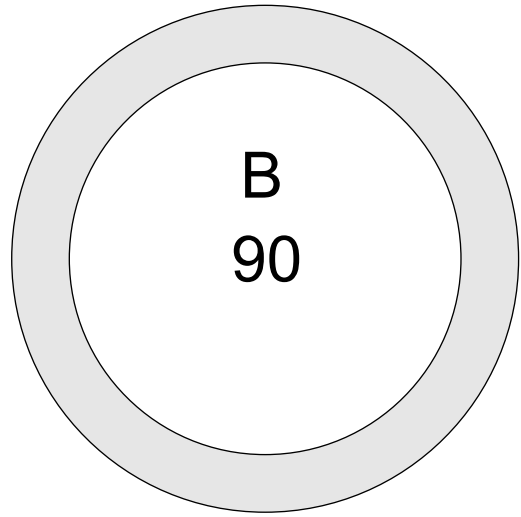
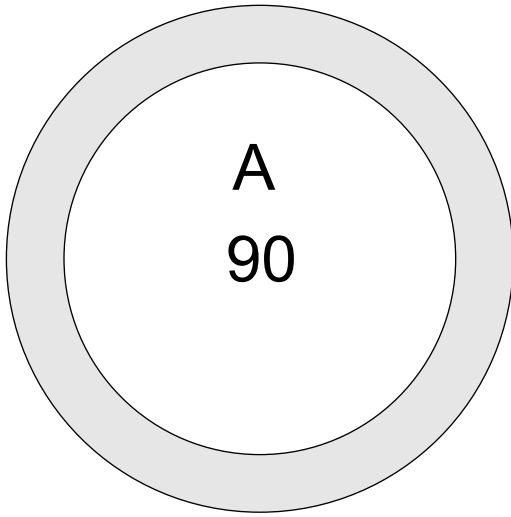


The only angled cuts are the interior of parts C, D and E. The exterior of all the rings are cut and 90 degrees and sanded after glueing to shape the cup.



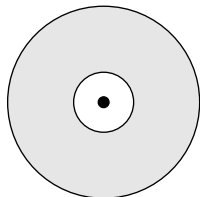
Reference
Pattern on the next two pages.

½" Thick

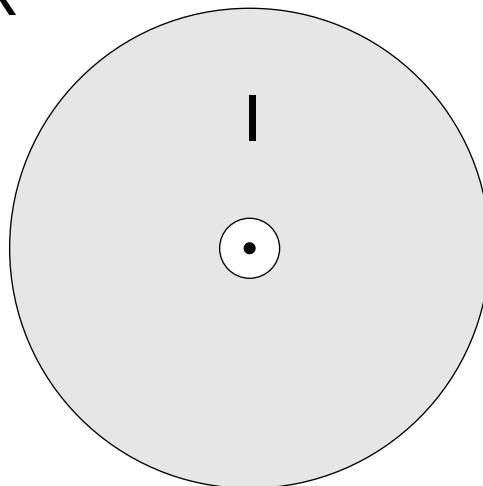


1/4" Thick

G



I



H



5/16" Diameter Dowel