



Digital Patterns

Designed by
Steve Good

www.scrollsawworkshop.blogspot.com

Home of Scroll Saw Pattern Printer
and the Scroll Saw Key Chain Printer



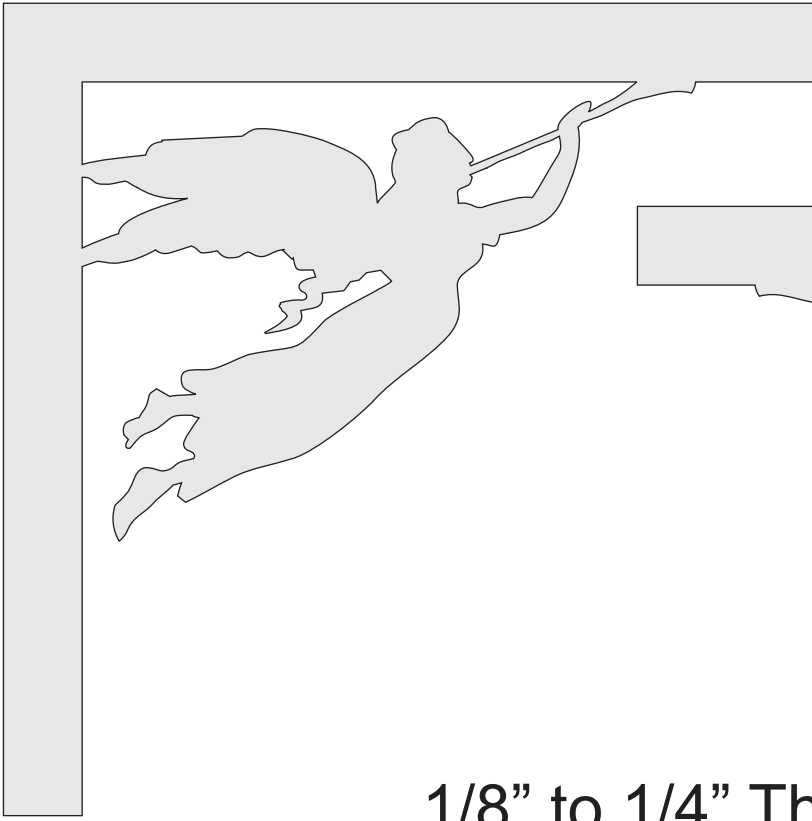


Silent Night

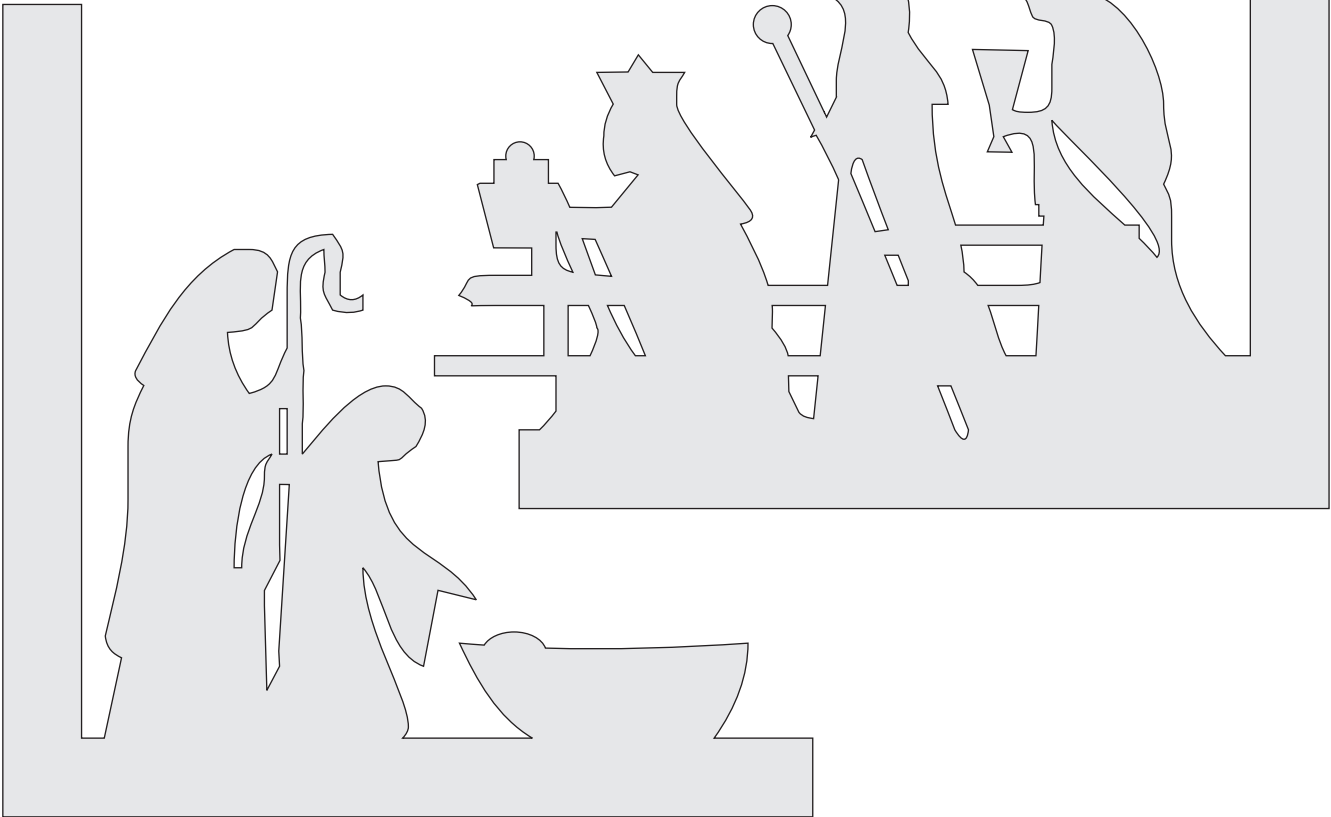


Franz Gruber





1/8" to 1/4" Thick

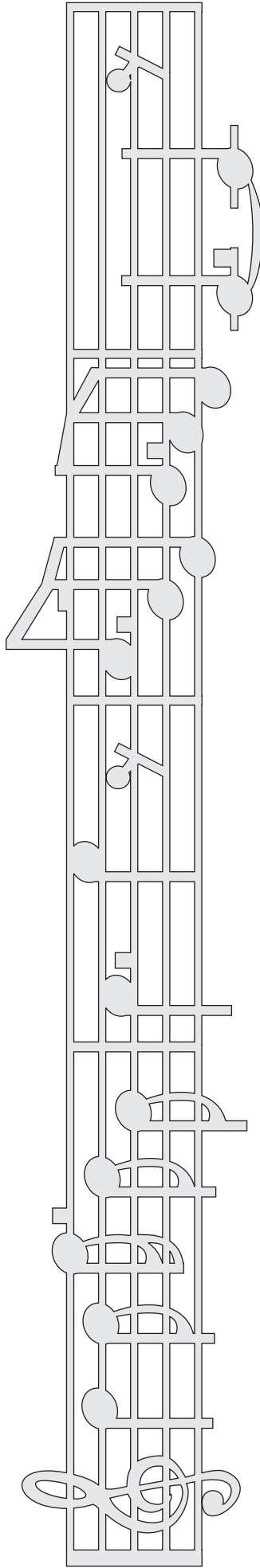
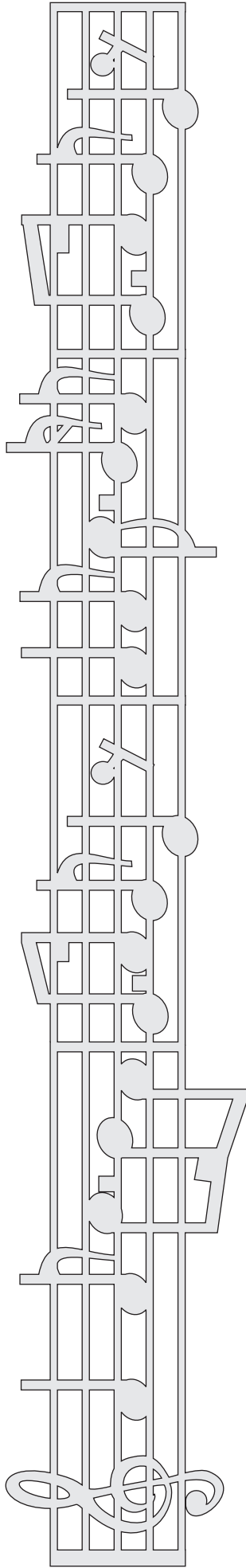
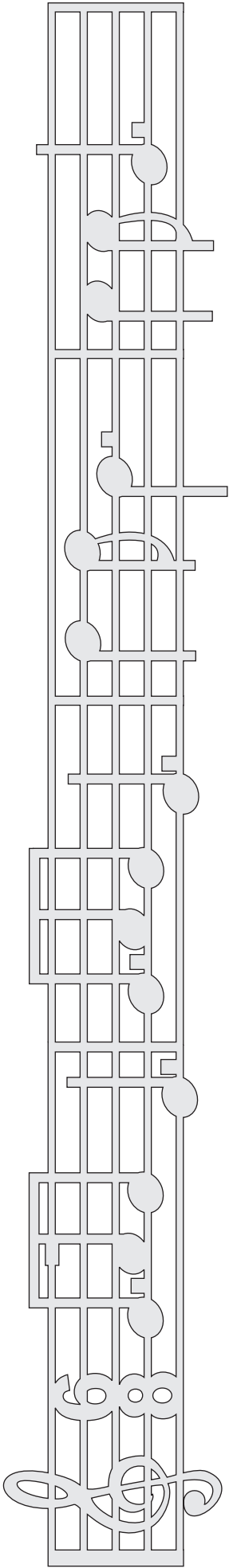


1/8" to 1/4" Thick Trim Pieces



1/8" to 1/4" Thick

Start Again



Start Again

Not drawn to scale.

Backer Board
13" x 14 ½"