

SCROLLSAW WORKSHOP

WWW.SCROLLSAWWORKSHOP.BLOGSPOT.COM

Digital Patterns

Designed by Steve Good



Hundreds of free Patterns
Stencil Printer
Jigsaw Puzzle Templates
DVD's
Key Chain Pattern Printer
Video Tutorials
Reviews
Community Forum and more.

If you would like
to donate click
here. No Paypal
account needed.



Note to commercial print employees: I give my permission to print as many of this pattern book as your customer requires.

steve@stevedgood.com

Copyright Steve Good 2017

General Pattern Information



You may use this pattern to make as many of the project as you like. You are free to use any technique including mass production to build the project. The pattern may be copied and given to others provided the entire book is kept intact. You may not sell the pattern or include it in another commercial package of any type.

Steve Good retains the right to the pattern. If you have any questions about the use of this pattern please contact me at steve@stevedgood.com

When printing this pattern it is important to print it full size. When you bring up the print dialog box look in the “Page Sizing & Handling” section. Make sure the “Actual Size” is selected before you hit print.

You also only need to print the page/s you need. After the print dialog opens look for the “Pages to Print” section. You can print the current page or a range of pages. This will help save ink by not printing the title/instruction pages.

Printing Instructions



Page Sizing & Handling ⓘ

Size

Poster

Multiple

Booklet

☐ Fit

☒ Actual size

☐ Shrink oversized pages

☐ Custom Scale: %

☐ Choose paper source by PDF page size

Pages to Print

☒ All

☐ Current page

☐ Pages

▶ More Options

Ornate Tray



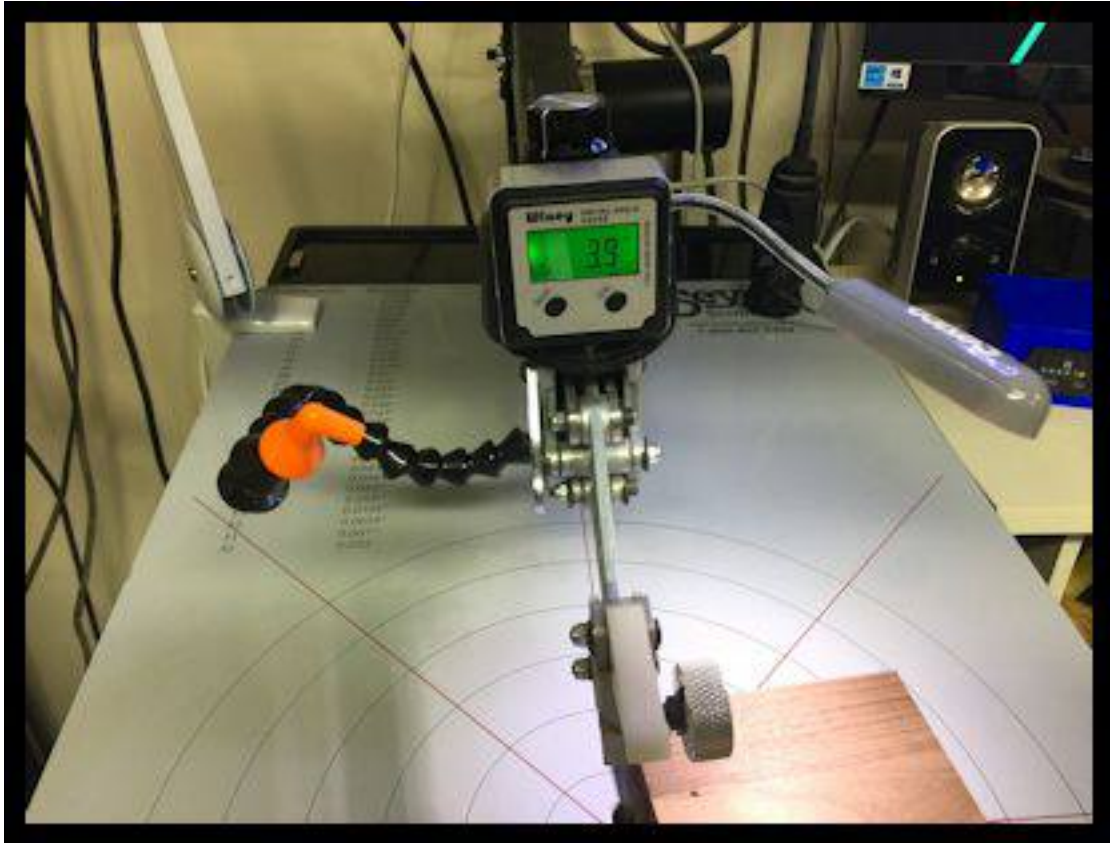
**Patter idea from John Fiorani
Carolina Scrollers - Winston Salem**



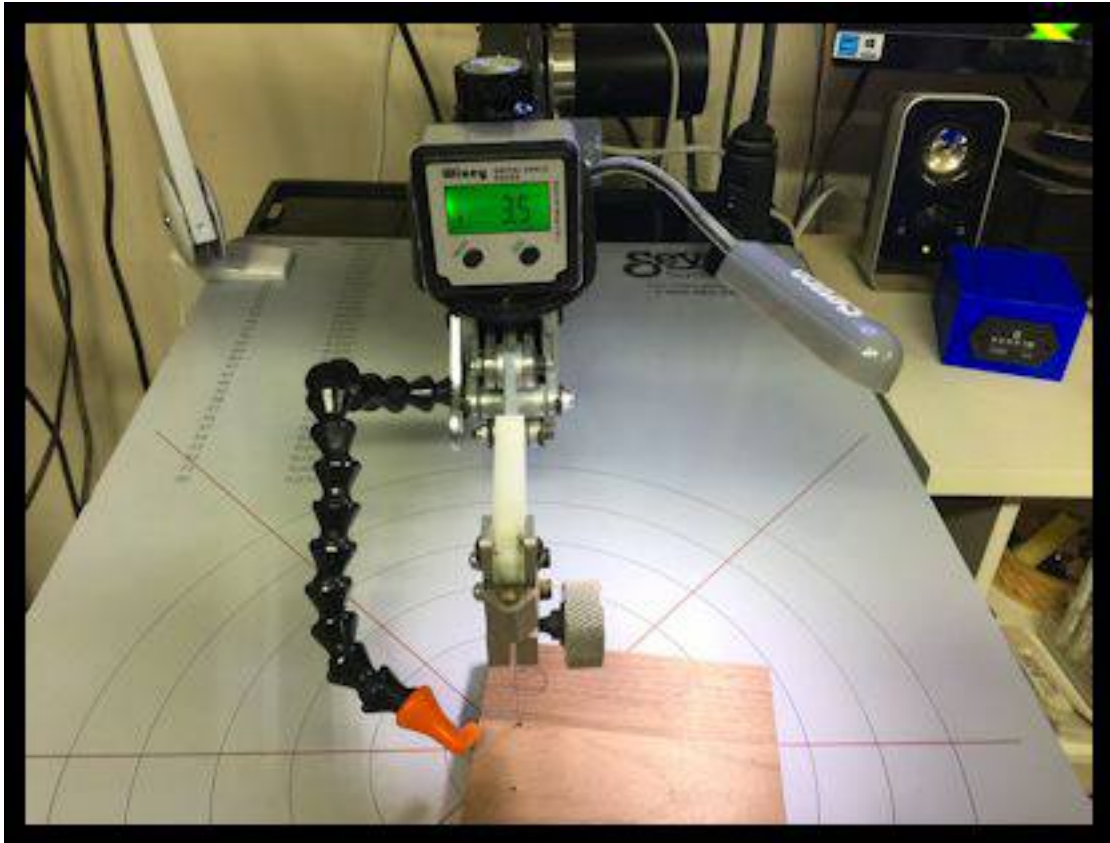
Prepare the patterns and gather supplies.
We have an extra scrap of the same wood
we will cut the tray from. This will be used to
test the angle of the cut.



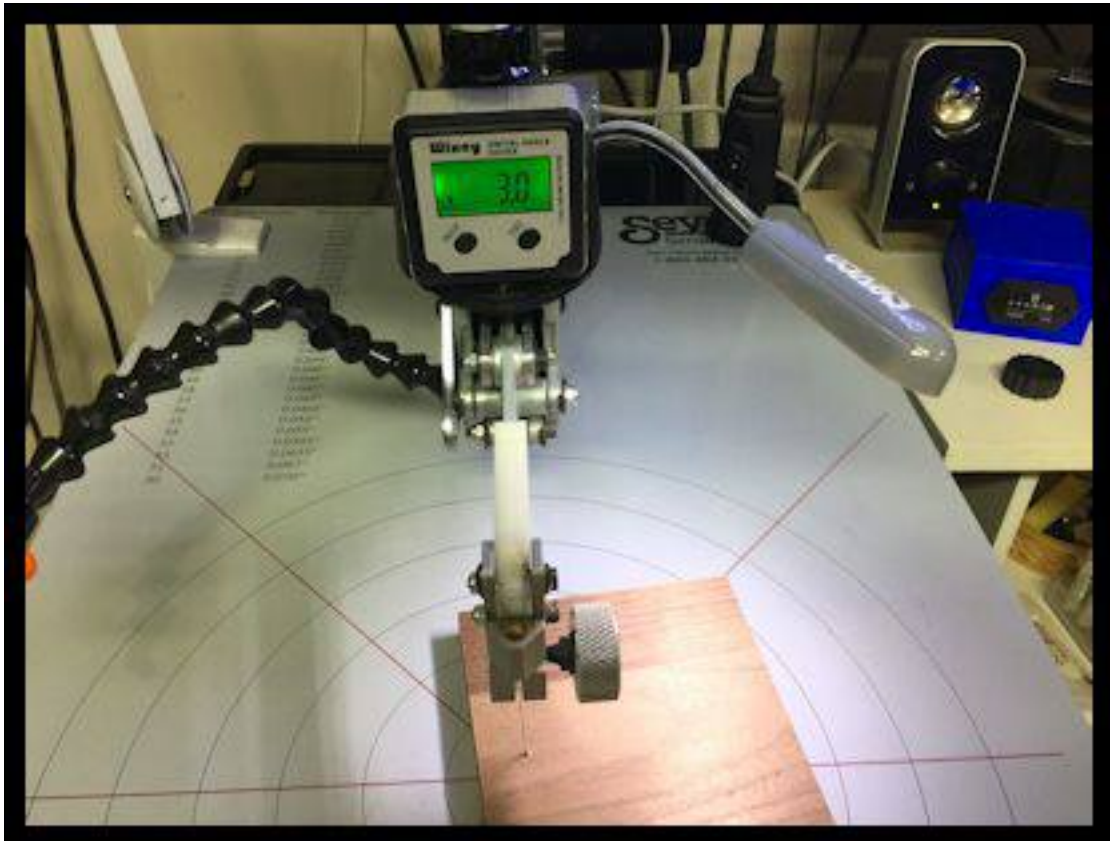
Apply the blue painters tape and the pattern to the wood.



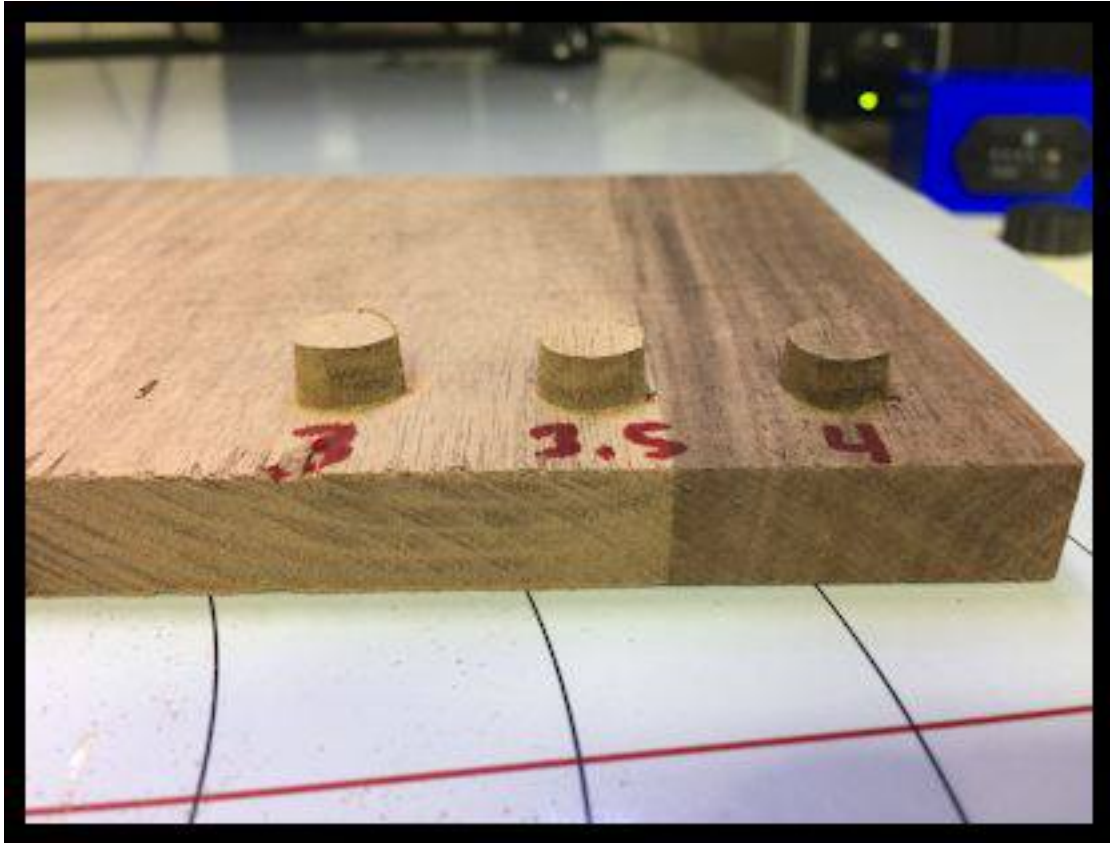
I have the test wood at the saw with the first test angle set to ~4 degrees. I will cut a small plug for the first test.



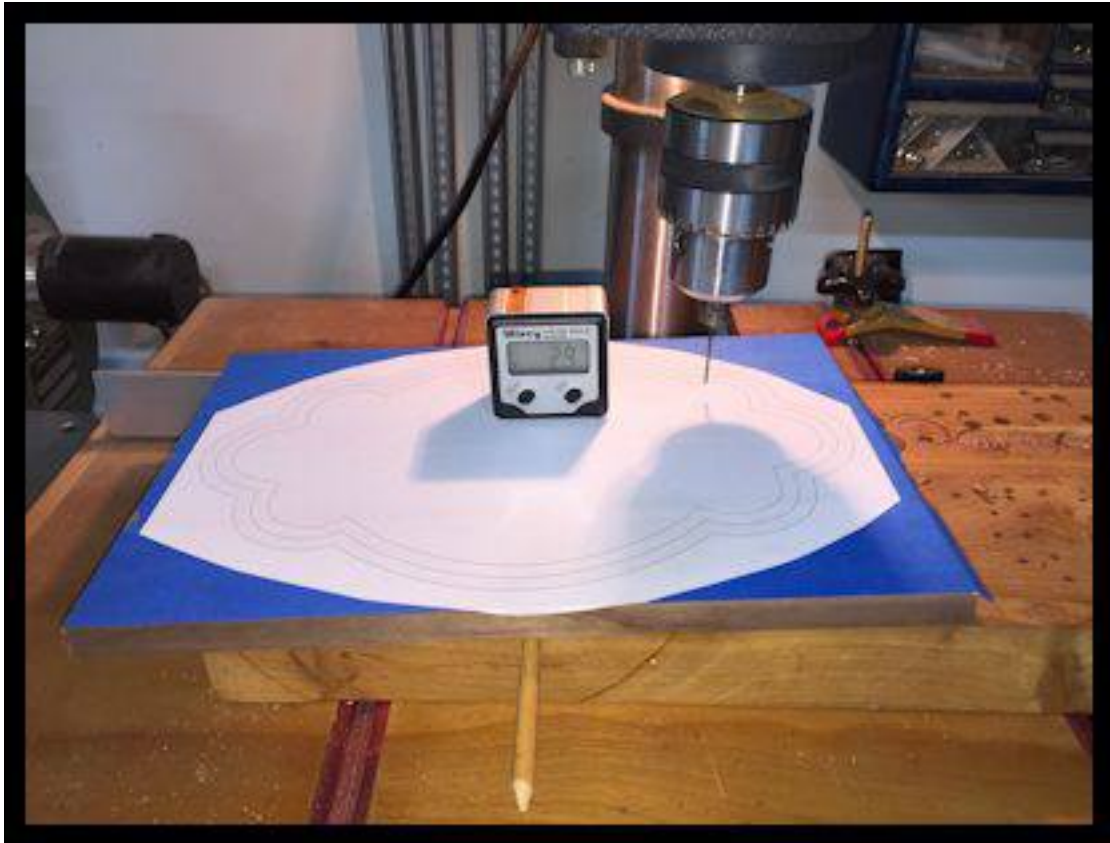
Second test plug at ~3.5 degrees



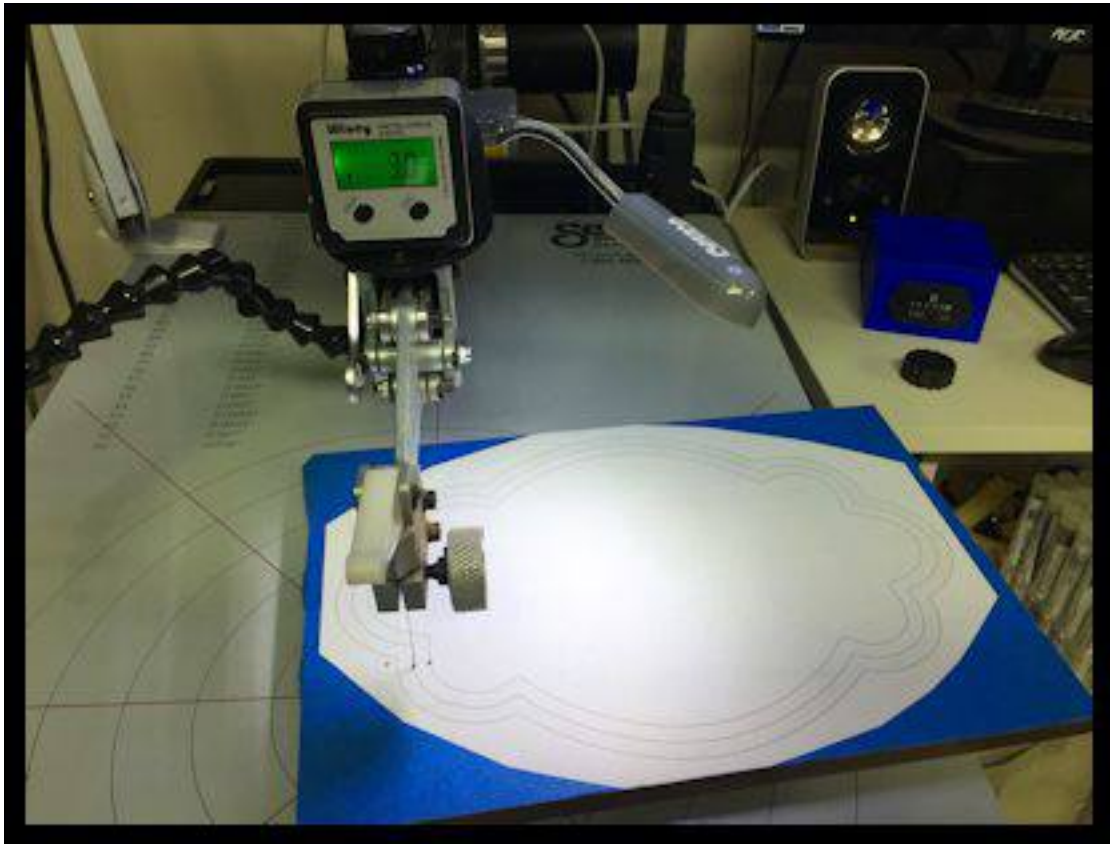
Next test cut at ~3 degrees



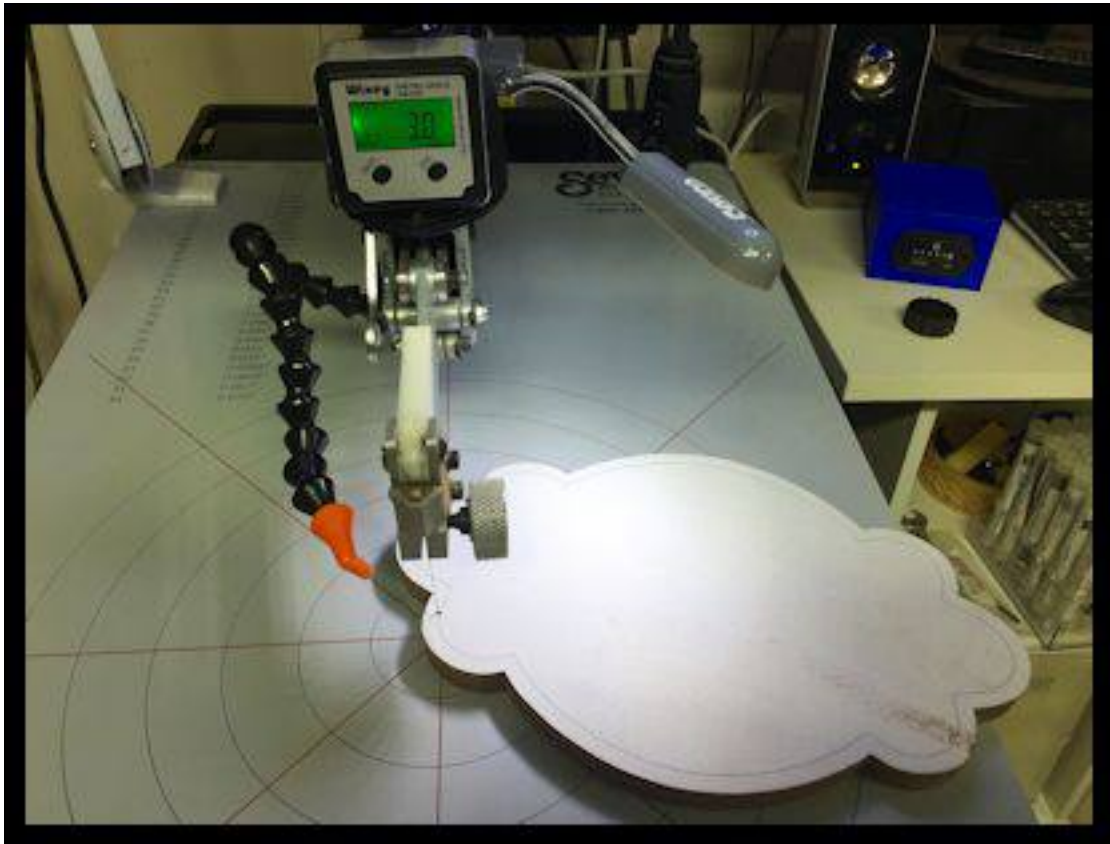
I pushed the plugs in until they stopped. I decided to go with 3 degrees.



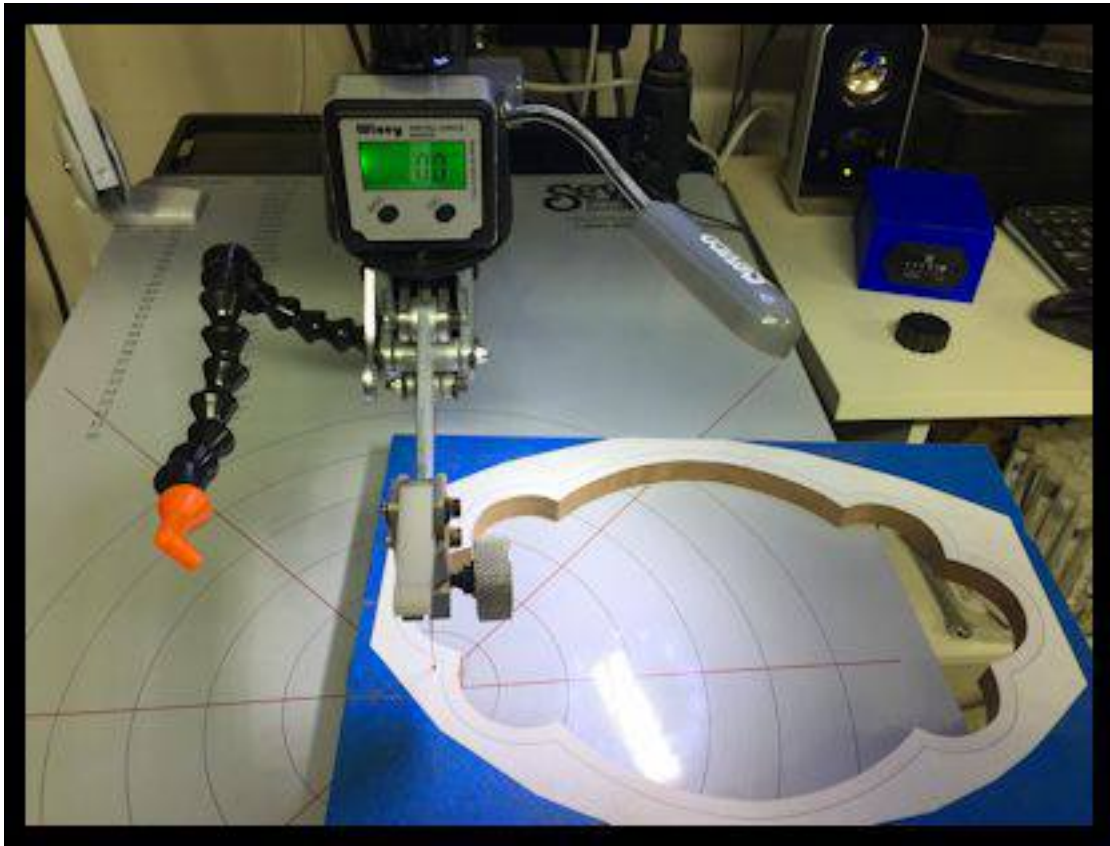
I will drill the entry hole for the two inner rings at 3 degrees. The outer rim will be cut at 90 degrees so that entry hole can be drilled straight.



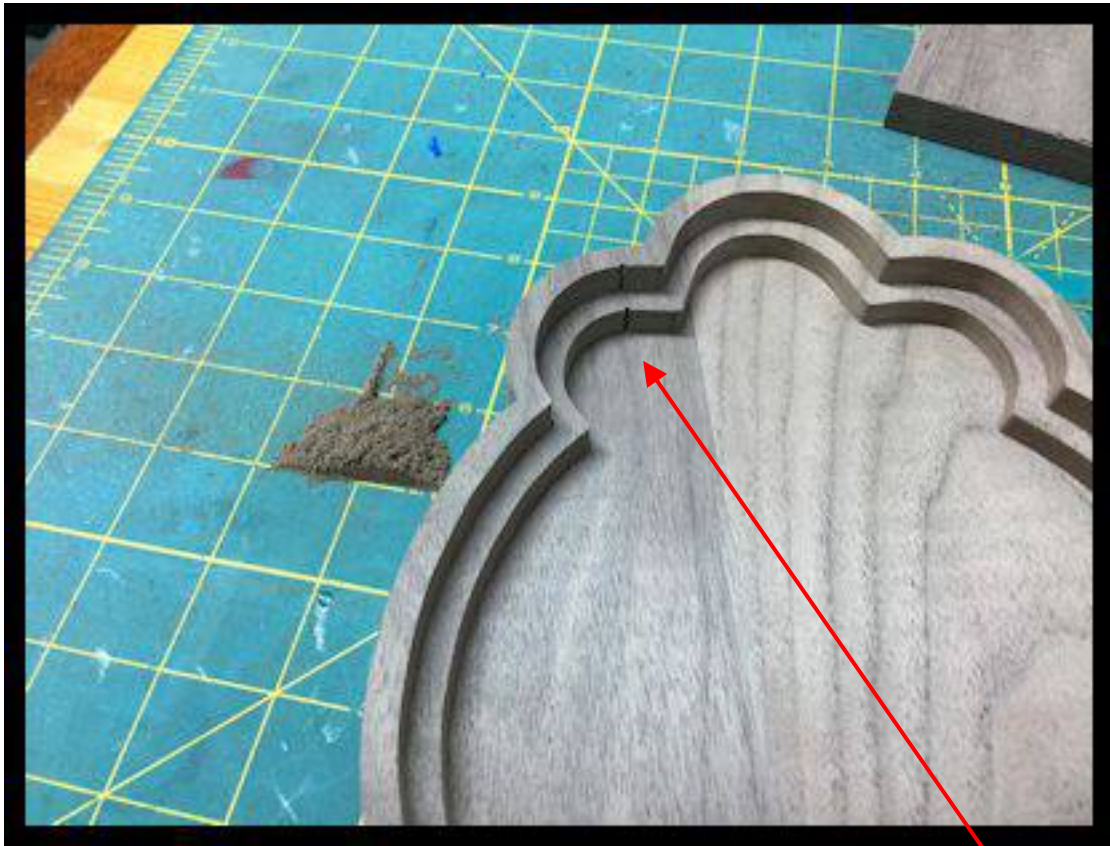
I'm starting on the center ring with the table at 3 degrees.



The inner ring is cut at 3 degrees.



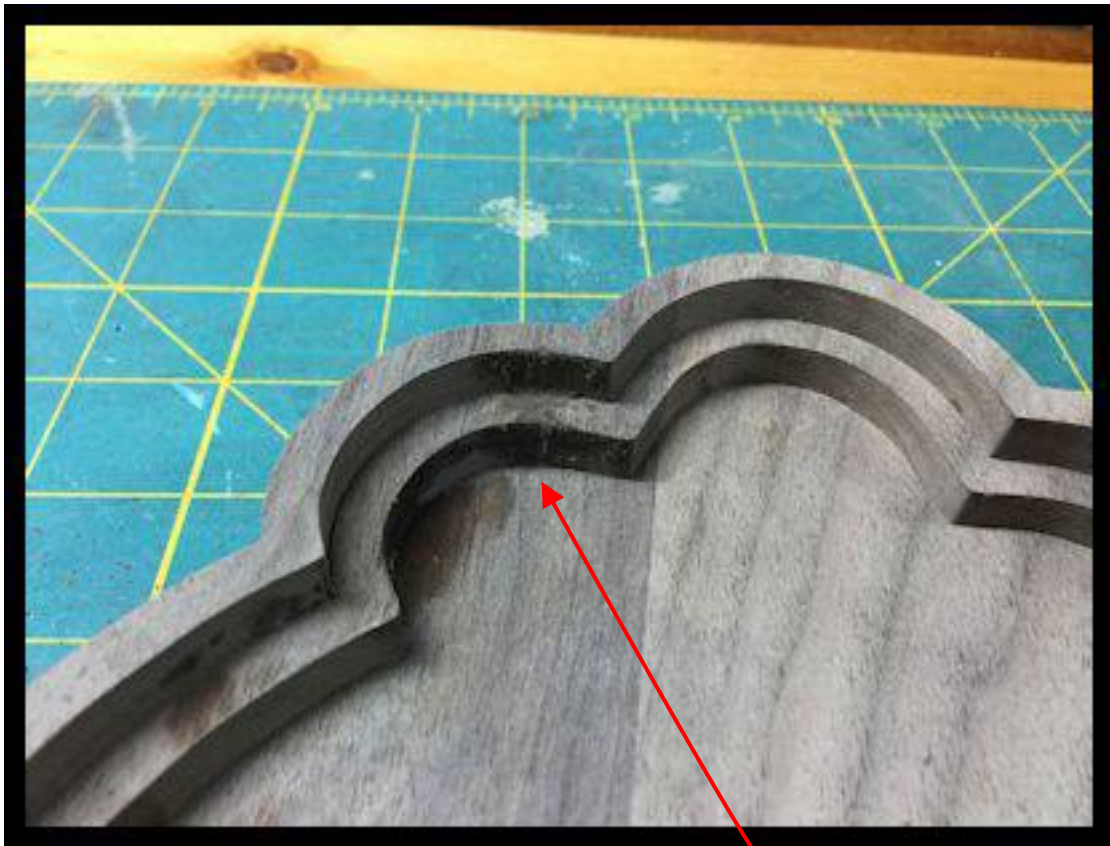
Now the outer ring is cut at 90 degrees.



I saved so saw dust to make a putty to fill the drill holes.



Mix the saw dust with some yellow glue. You want a putty consistency.



Fill the drill holes with the putty.

Sand and finish as desired.

1/2" Thick

