

SCROLLSAW WORKSHOP

WWW.SCROLLSAWWORKSHOP.BLOGSPOT.COM

Digital Patterns

Designed by Steve Good



Hundreds of free Patterns
Stencil Printer
Jigsaw Puzzle Templates
DVD's
Key Chain Pattern Printer
Video Tutorials
Reviews
Community Forum and more.



Note to commercial print employees: I give my permission to print as many of this pattern book as your customer requires.

steve@stevedgood.com

Copyright Steve Good 2015



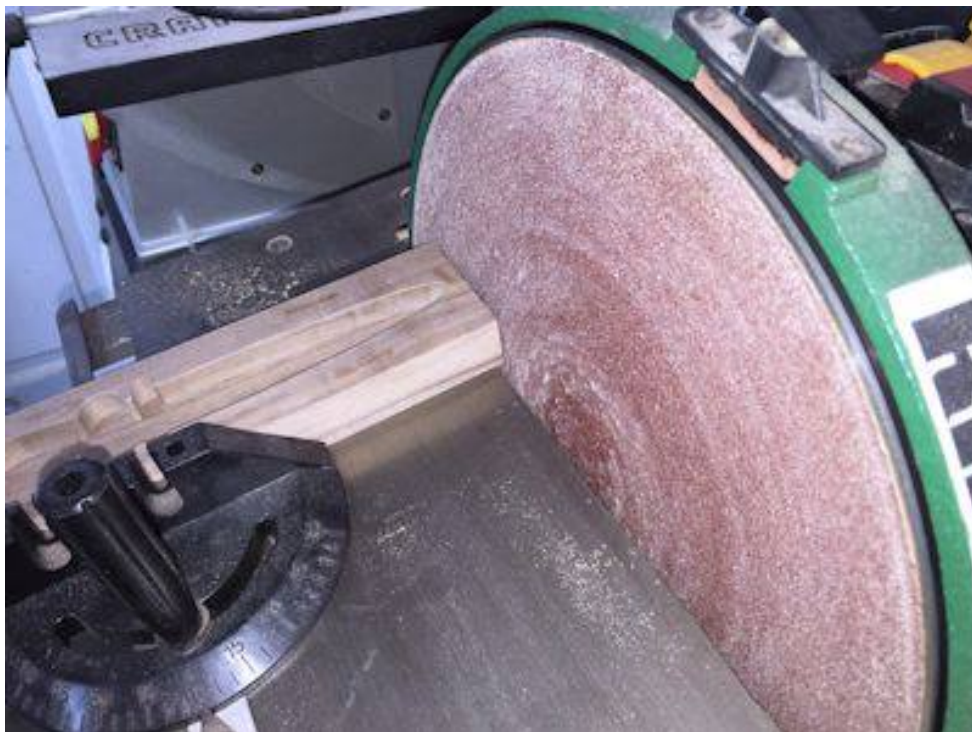
Three letter opener designs
with stand.



We will make the stand from two 1/2" Thick parts.
Cut the opening from one part and glue the back on.
Sand the edges flush, clamp and finish sand.



Sand or cut a 10 degree bevel on the bottom of the stand.





We will use the waste material from the stand to trace and cut out the felt.

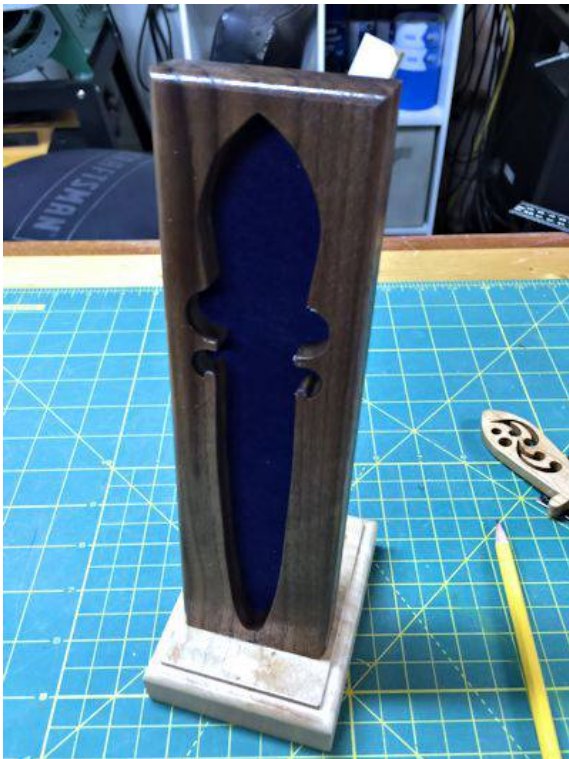
I cut it out by following the waste with an Exacto knife.



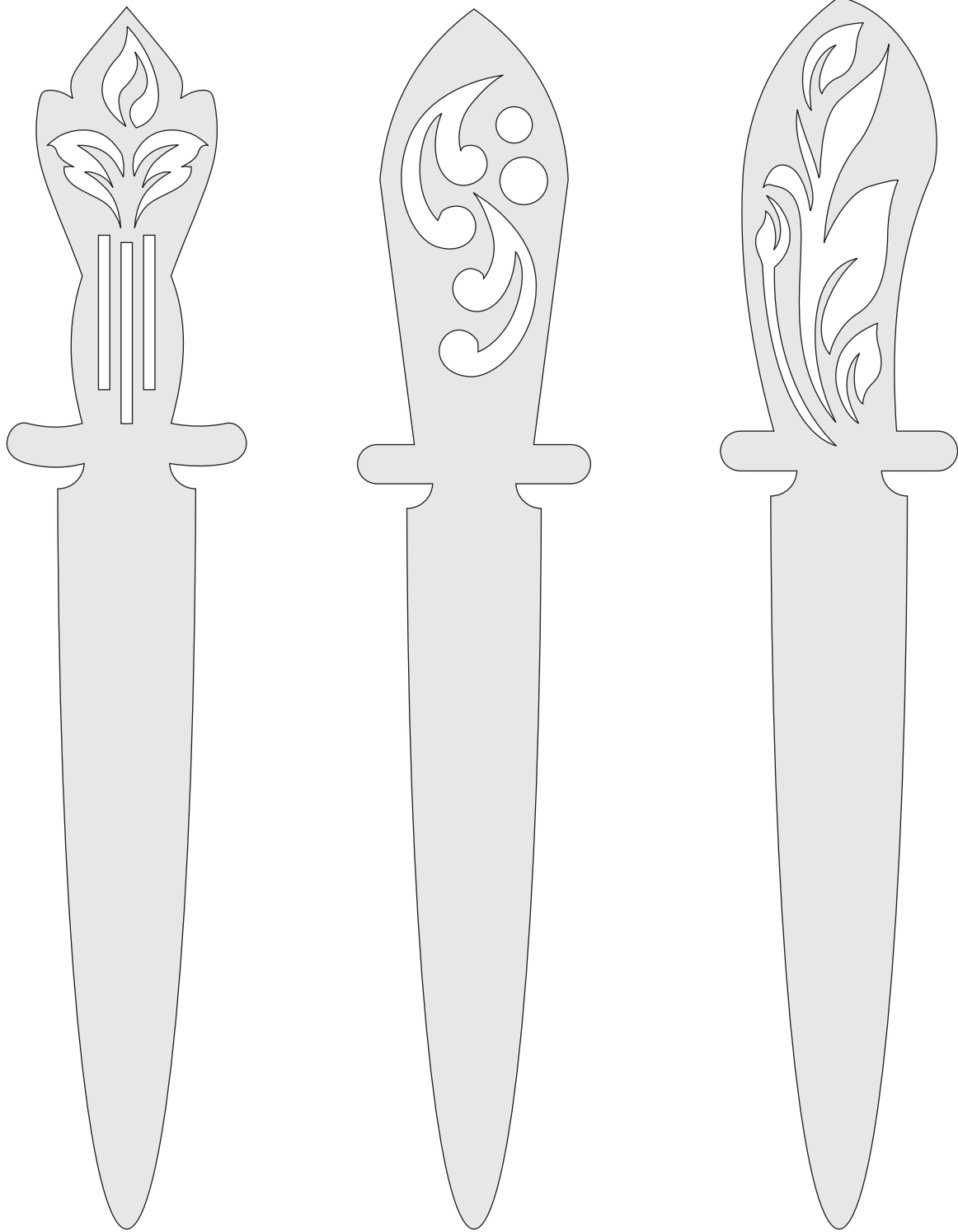


Glue the stand to the base. Notice that it leans back because of the ten degree bevel we made.

I used self adhesive felt but if you don't have that just use spray adhesive to glue the felt into the stand.



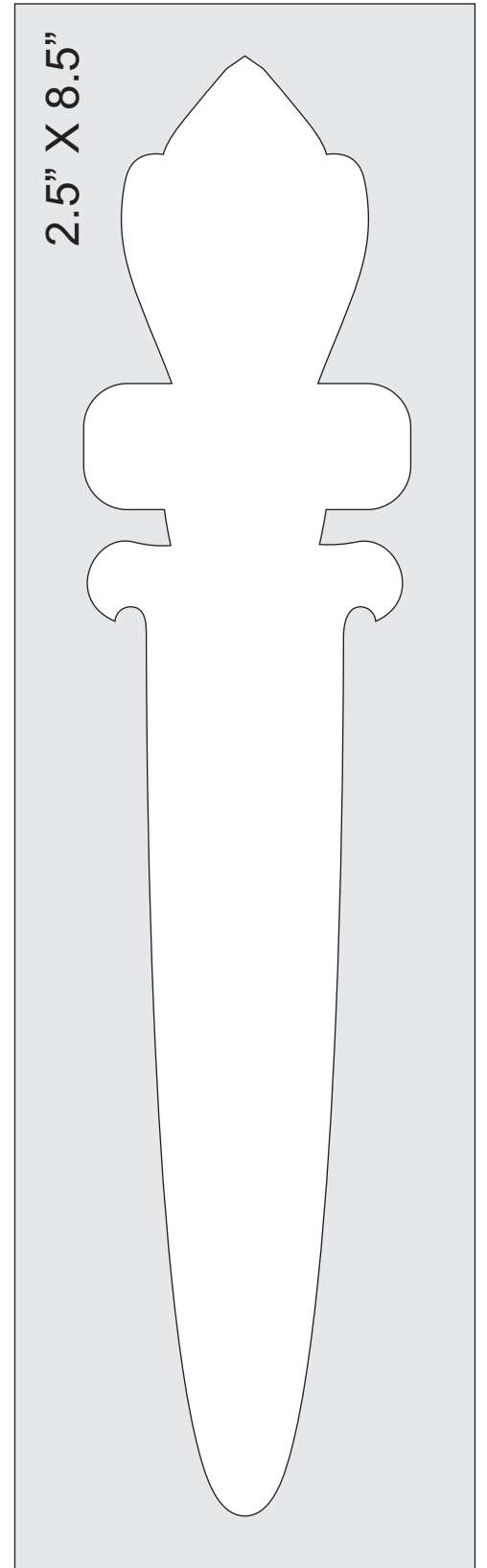
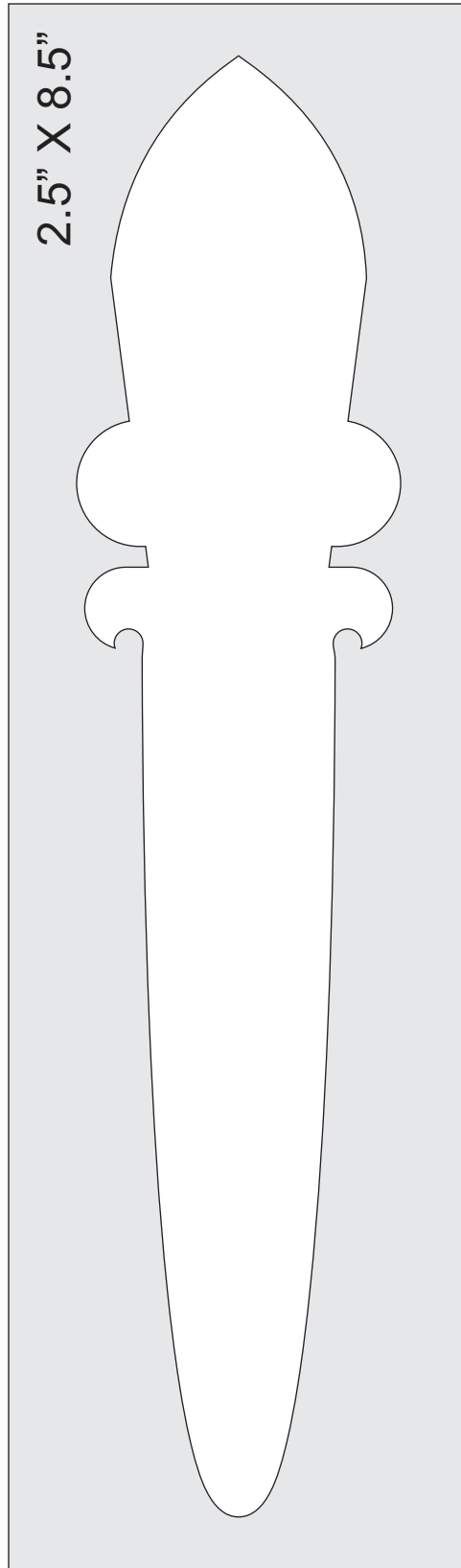
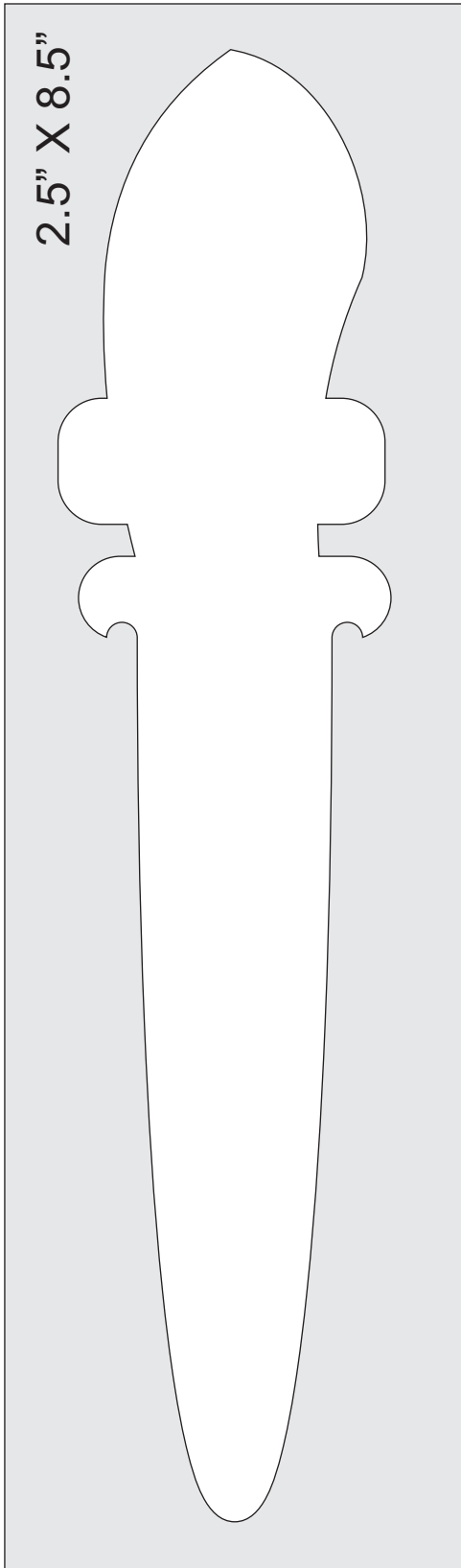
3/8" Thick



Power sand to a tapered point.

1/2" Thick


Will be glued to the part on the next page to make it 1" thick.



2.5" X 8.5"

2.5" X 8.5"

2.5" X 8.5"



1" Thick Base