

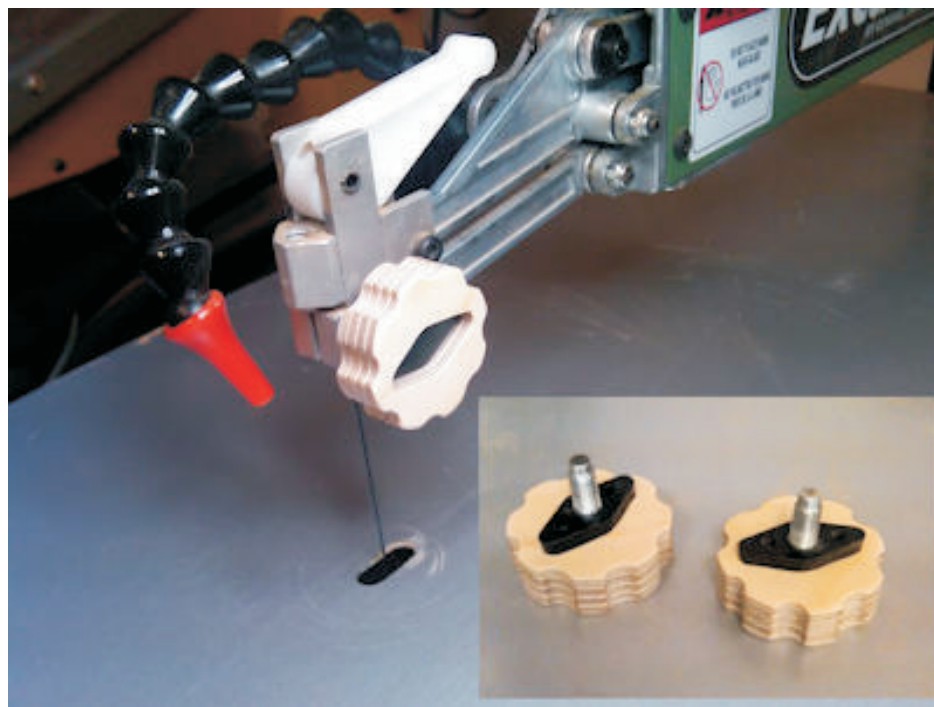


# Digital Patterns

Designed by  
Steve Good

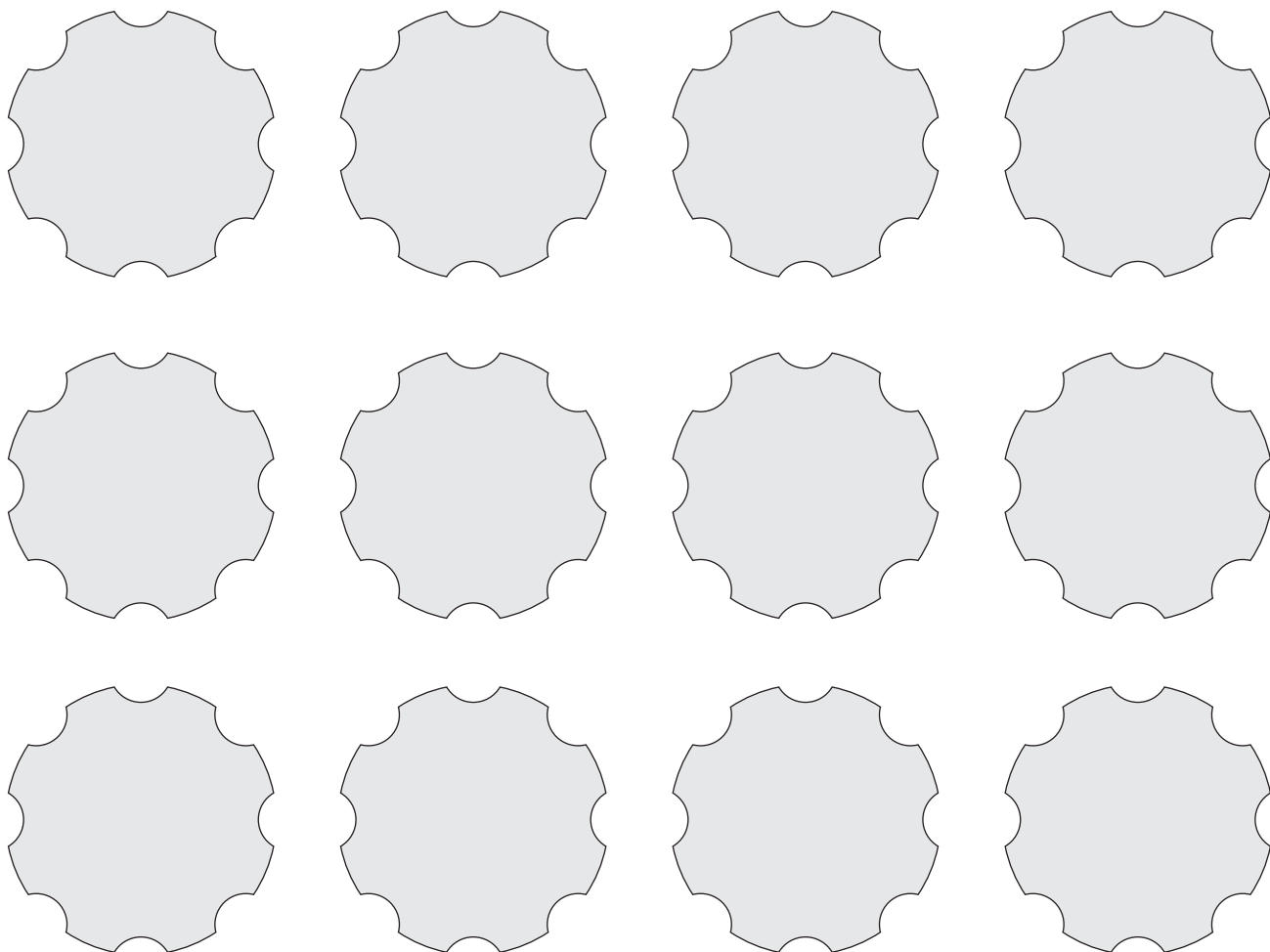
[www.scrollsawworkshop.blogspot.com](http://www.scrollsawworkshop.blogspot.com)

Home of Scroll Saw Pattern Printer  
and the Scroll Saw Key Chain Printer

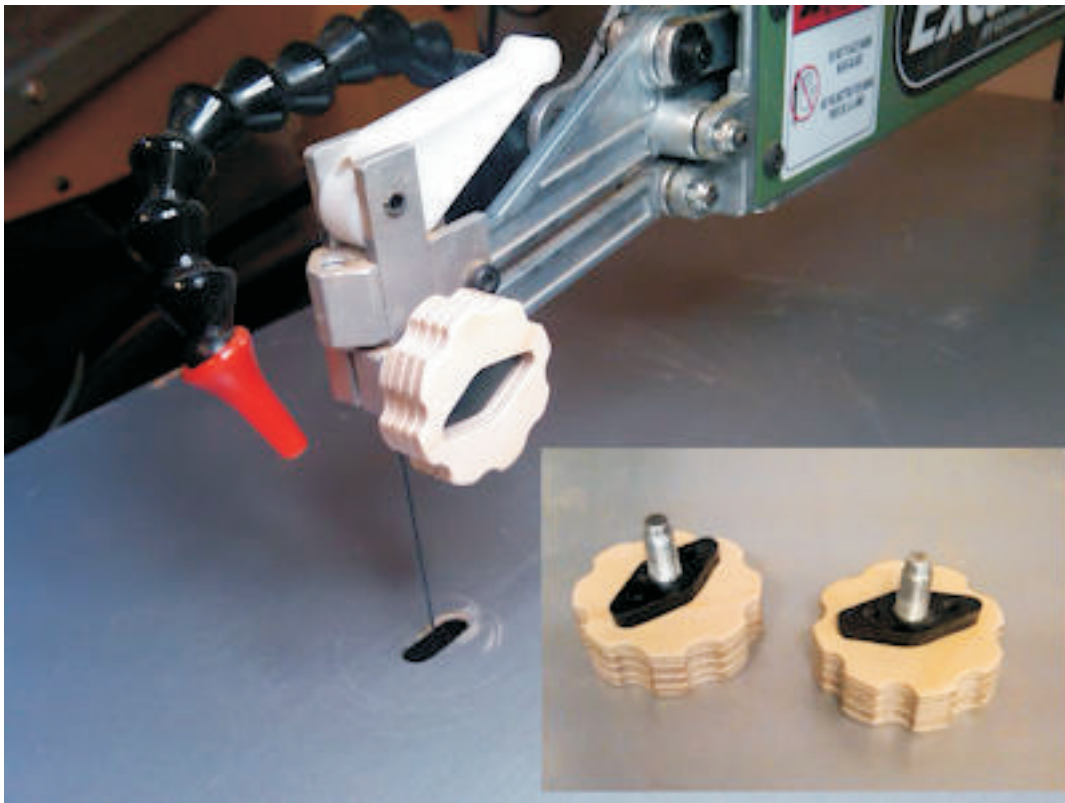


Note to commercial print employees: I give my permission to print as many of this pattern book as your customer requires.

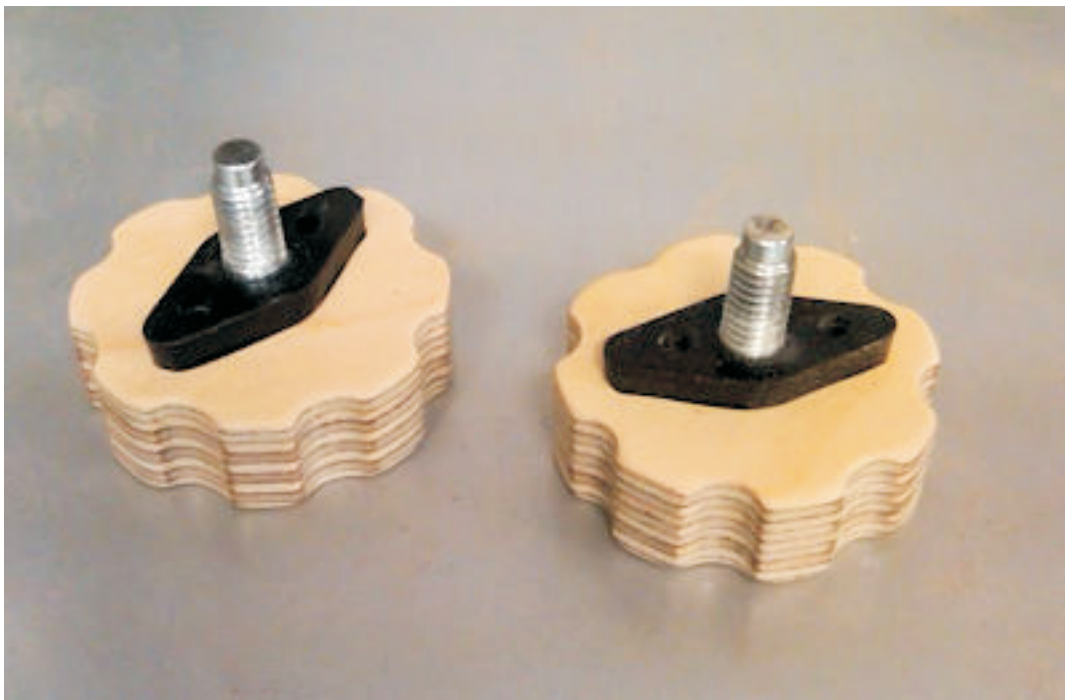
## knurled knobs for Excalibur Scroll Saw



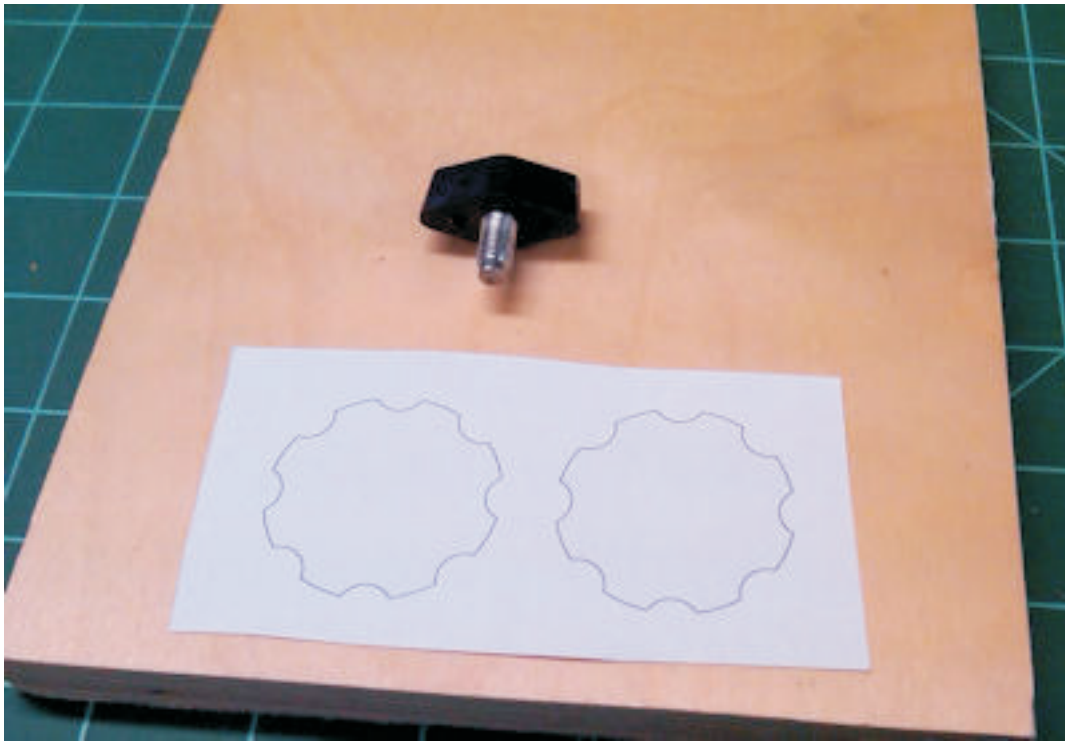
$\frac{1}{2}$ " Thick Baltic Birch Ply



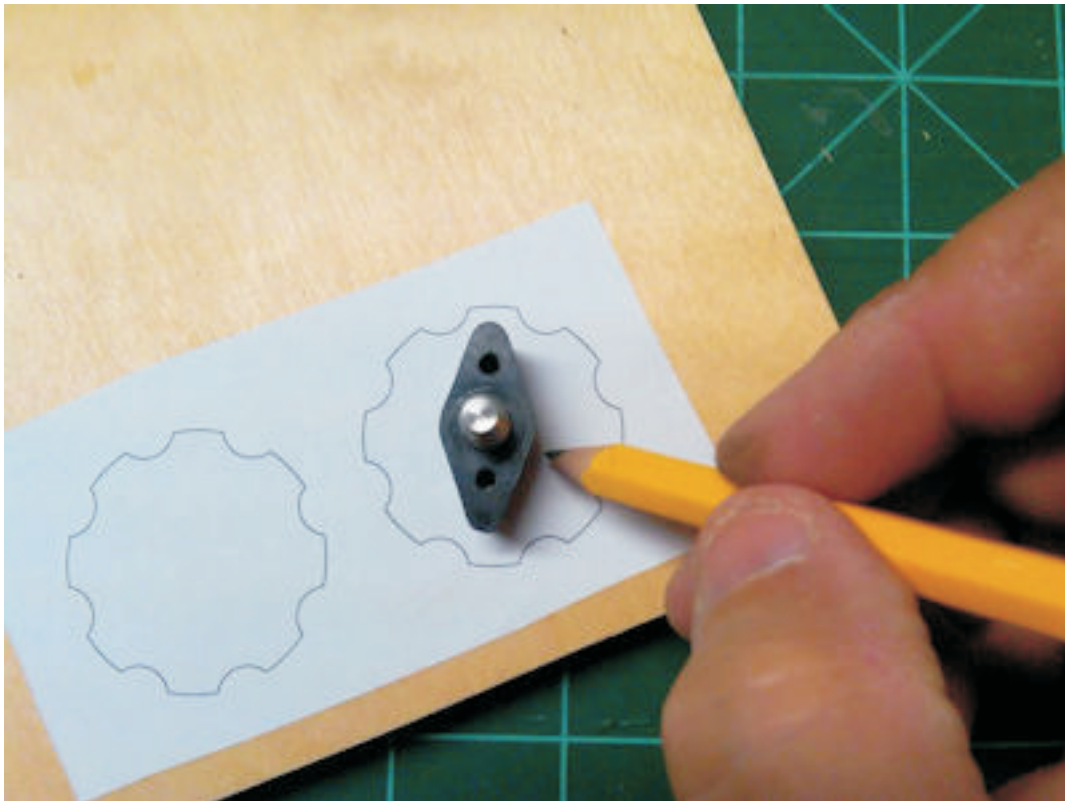
The T style knobs that come with the Excalibur scroll saws can be uncomfortable. Why not use the scroll saw to make a set of knurled knobs for better comfort. The picture above shows the top knob in place. These knobs are simply press fit over the plastic T so they can be removed easily and replaced if they break.



For the best strength I suggest you use  $\frac{1}{2}$ " Baltic Birch plywood. You can see in the picture above the all the plies of this high quality plywood.

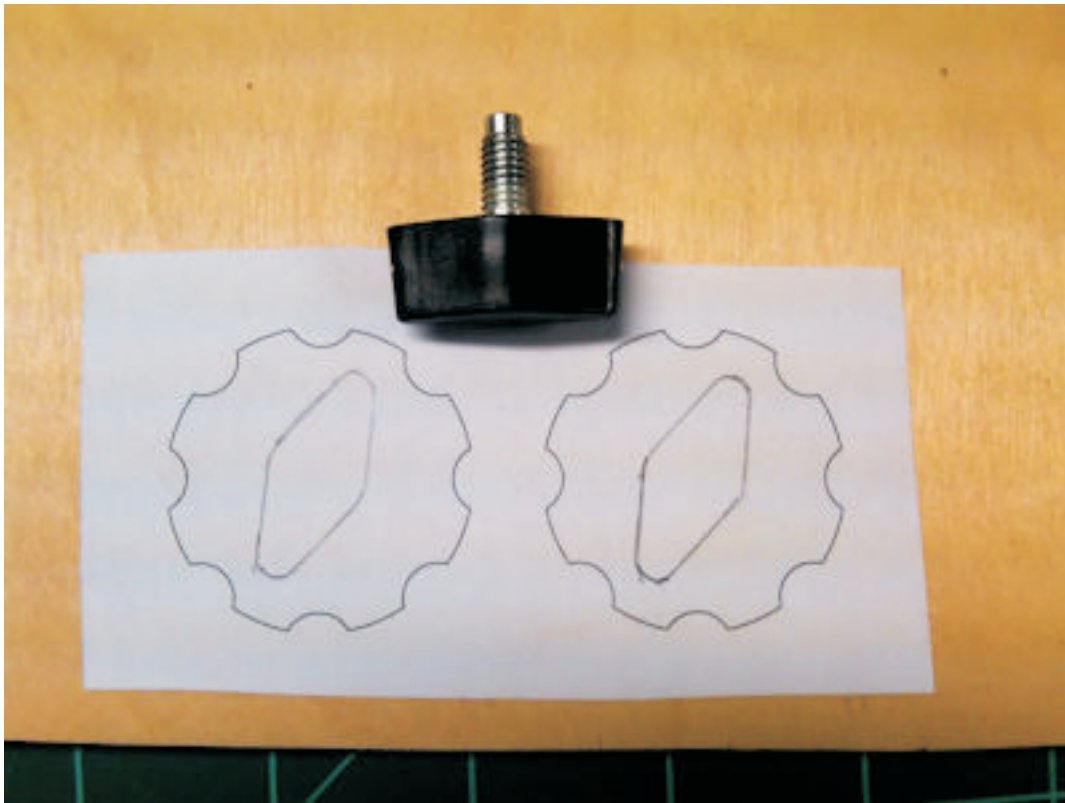


Apply the pattern to the plywood with spray adhesive.

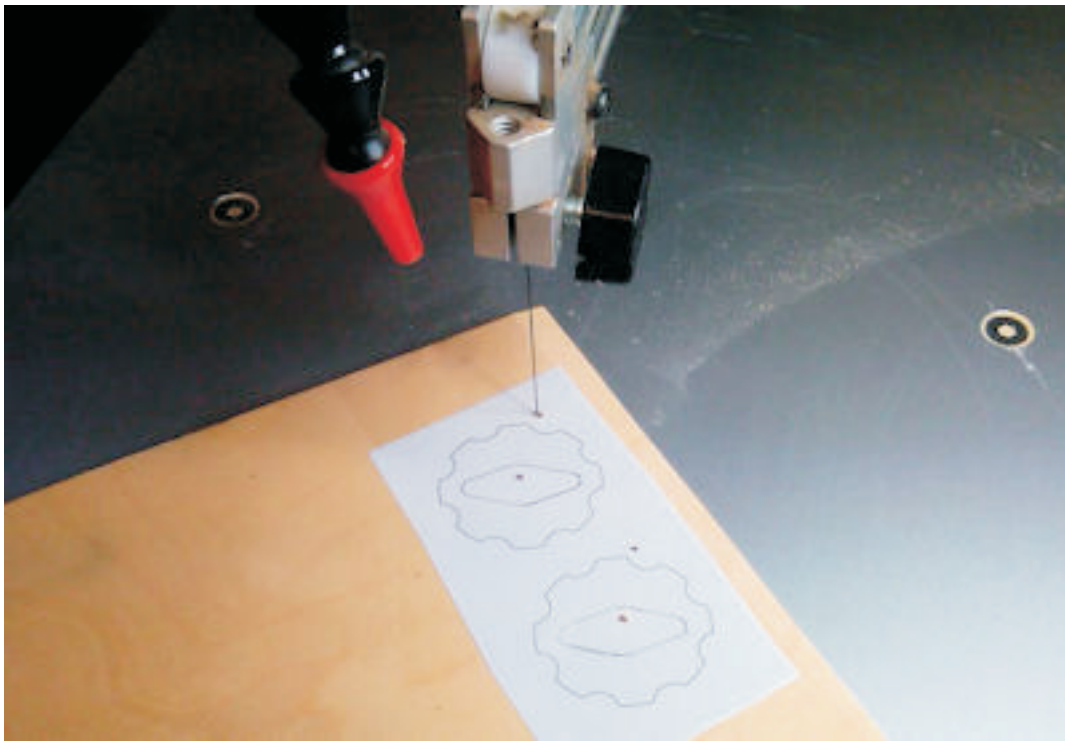


With a very sharp pencil trace the outline of the blade clamp. Note the orientation of the clamp on the knob. Make sure it is centered and pointed to a high spot on the knob.

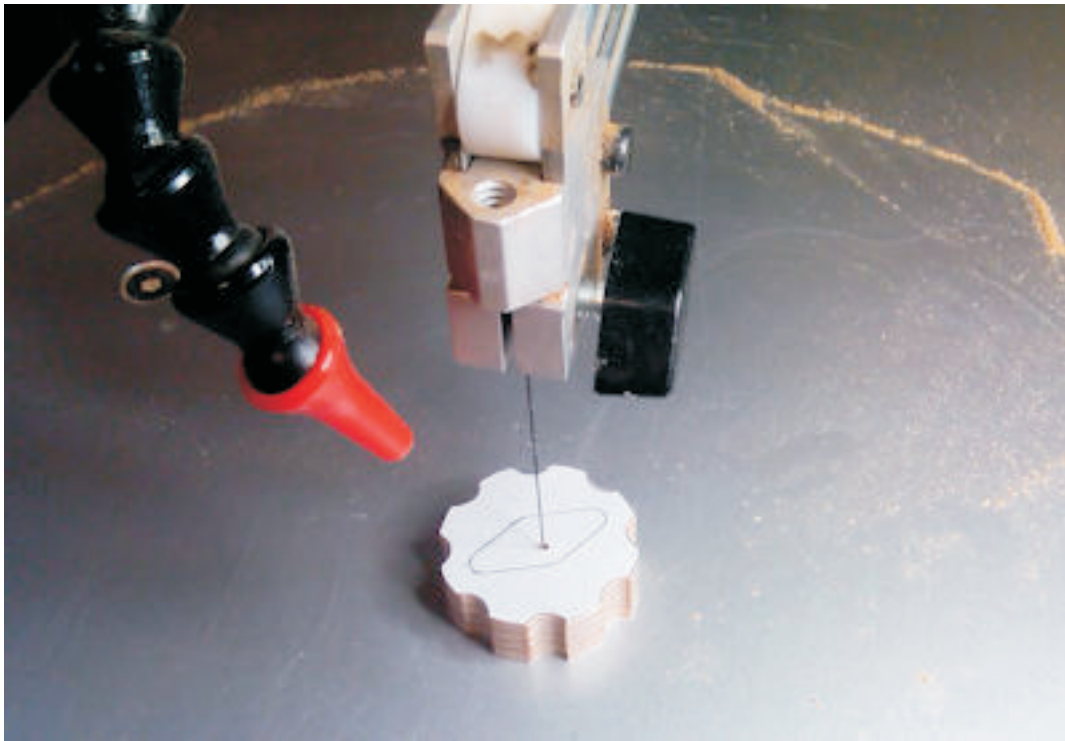




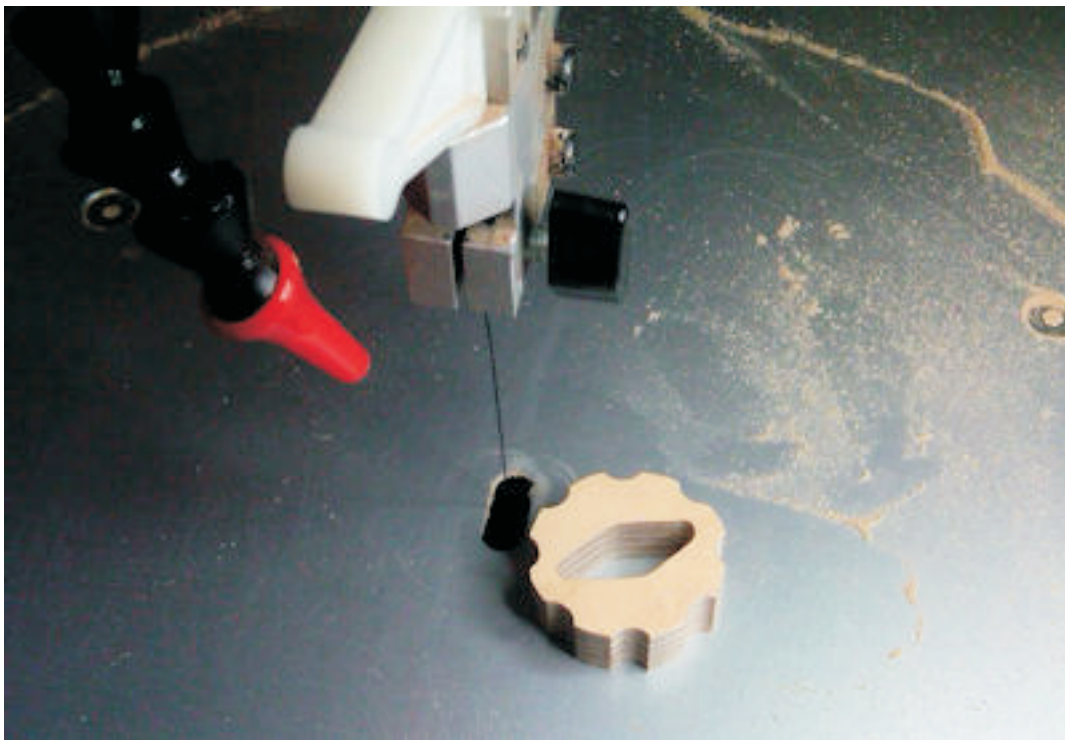
Note the taper of the plastic on the blade clamp. Because of this taper the clamp will fit very snug if you cut just to the outside of the outline you drew. Experiment for the fit you like.



Drill your entry holes and prepare to cut out the knobs.



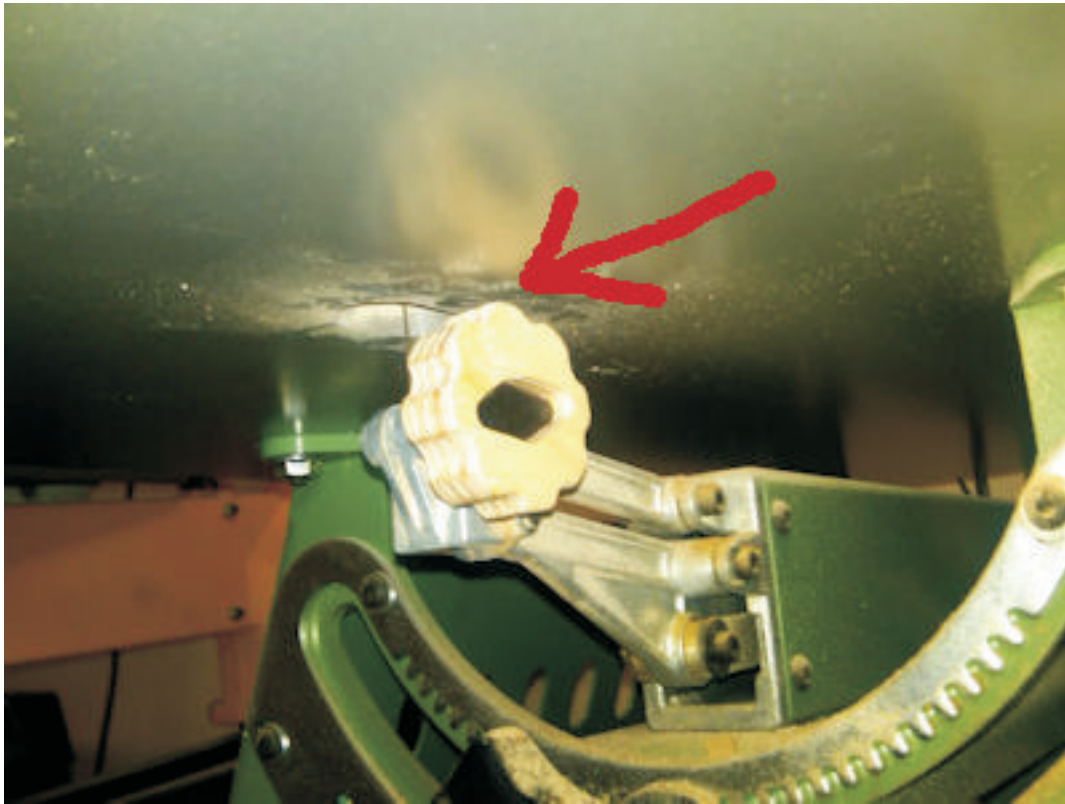
Carefully cut out the interior hole. Because you traced the plastic at the smallest point of the taper you will want to cut on the outside of the line. As you push the clamp into the hole the taper should make for a nice tight fit.



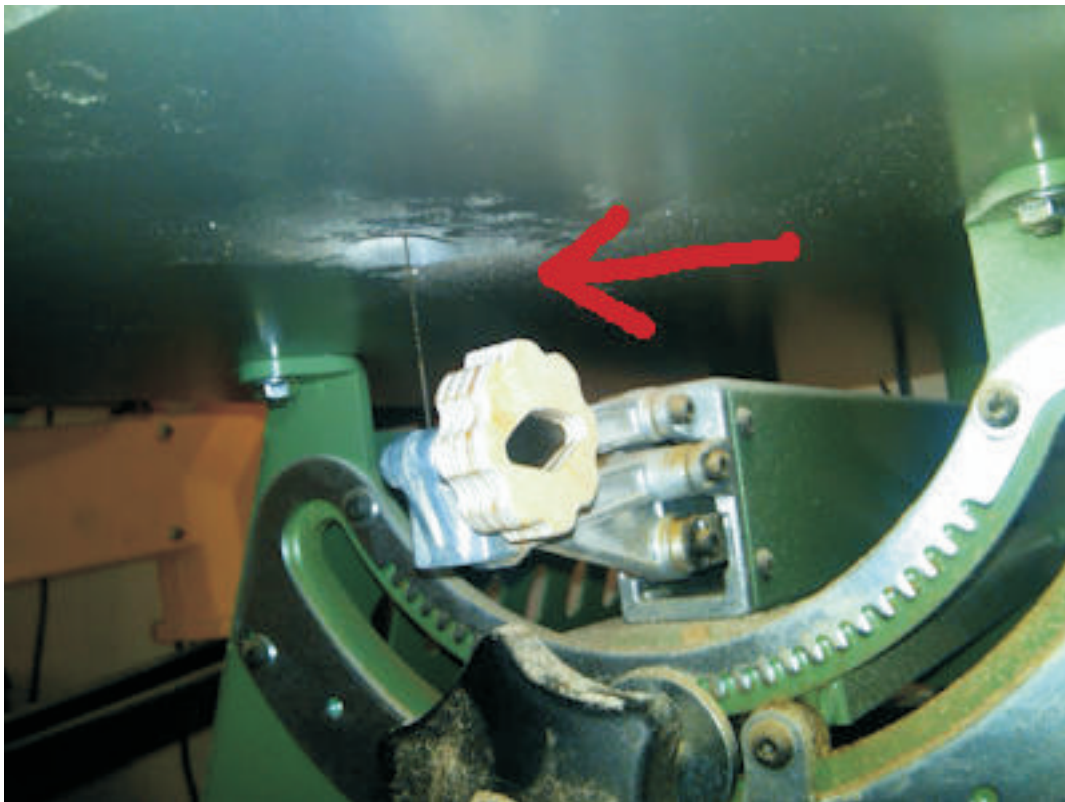


After you have the knobs cut out you want to sand them to a comfortable feel. I used my mop sander to make quick work of the easing of all the edges.

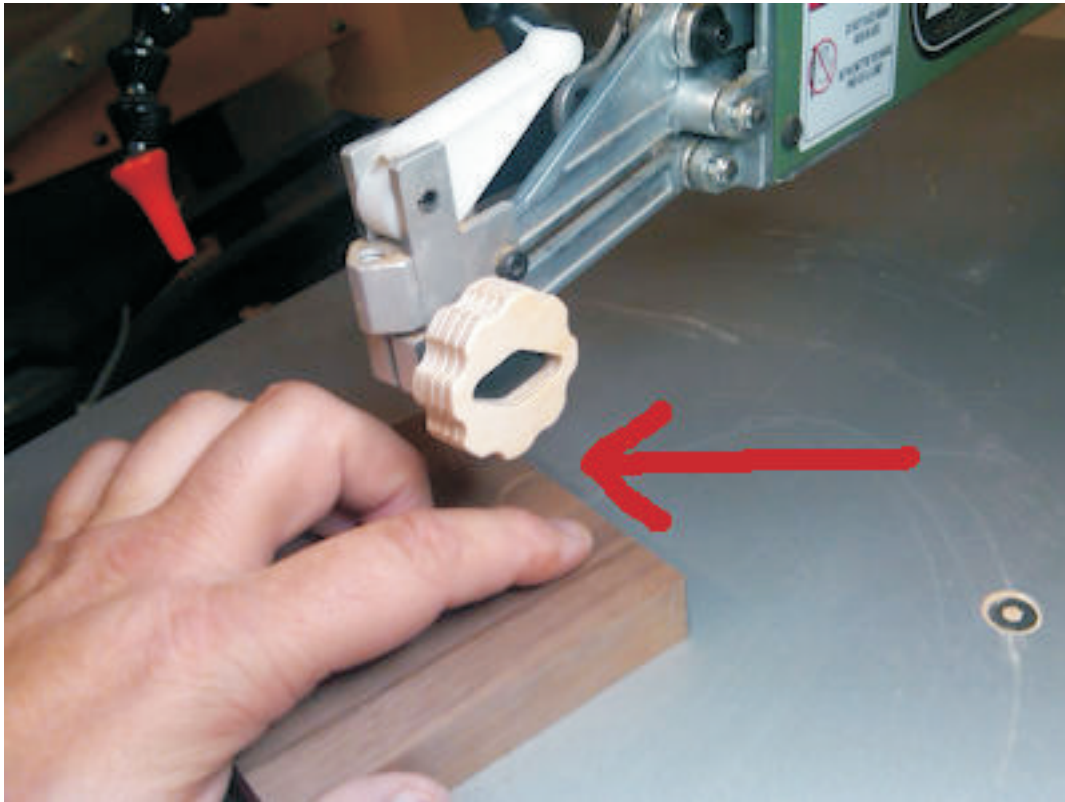




This is a picture of the knob installed on the bottom blade clamp. The picture above shows the lower arm in it's highest position. In this position it's still a little difficult to turn the knob. I suggest you push the arm down so you have more clearance like the picture below. Now you have plenty of room to grip and turn the knob.







The new knobs do slightly decrease the amount of room you have between the knob and the wood. Make sure you pay attention to where you place your fingers to prevent pinching.