

SCROLLSAW WORKSHOP

WWW.SCROLLSAWWORKSHOP.BLOGSPOT.COM

Digital Patterns

Designed by Steve Good



Hundreds of free Patterns
Stencil Printer
Jigsaw Puzzle Templates
DVD's
Key Chain Pattern Printer
Video Tutorials
Reviews
Community Forum and more.

If you would like
to donate click
here. No Paypal
account needed.



Note to commercial print employees: I give my permission to print as many of this pattern book as your customer requires.

steve@stevedgood.com

Copyright Steve Good 2019

General Pattern Information



You may use this pattern to make as many of the project as you like. You are free to use any technique including mass production to build the project. The pattern may be copied and given to others provided the entire book is kept intact. You may not sell the pattern or include it in another commercial package of any type.

Steve Good retains the right to the pattern. If you have any questions about the use of this pattern please contact me at steve@stevedgood.com

When printing this pattern it is important to print it full size. When you bring up the print dialog box look in the “Page Sizing & Handling” section. Make sure the “Actual Size” is selected before you hit print.

You also only need to print the page/s you need. After the print dialog opens look for the “Pages to Print” section. You can print the current page or a range of pages. This will help save ink by not printing the title/instruction pages.

Printing Instructions



Page Sizing & Handling ⓘ

Size

Poster

Multiple

Booklet

☐ Fit

☒ Actual size

☐ Shrink oversized pages

☐ Custom Scale: %

☐ Choose paper source by PDF page size

Pages to Print

☒ All

☐ Current page

☐ Pages

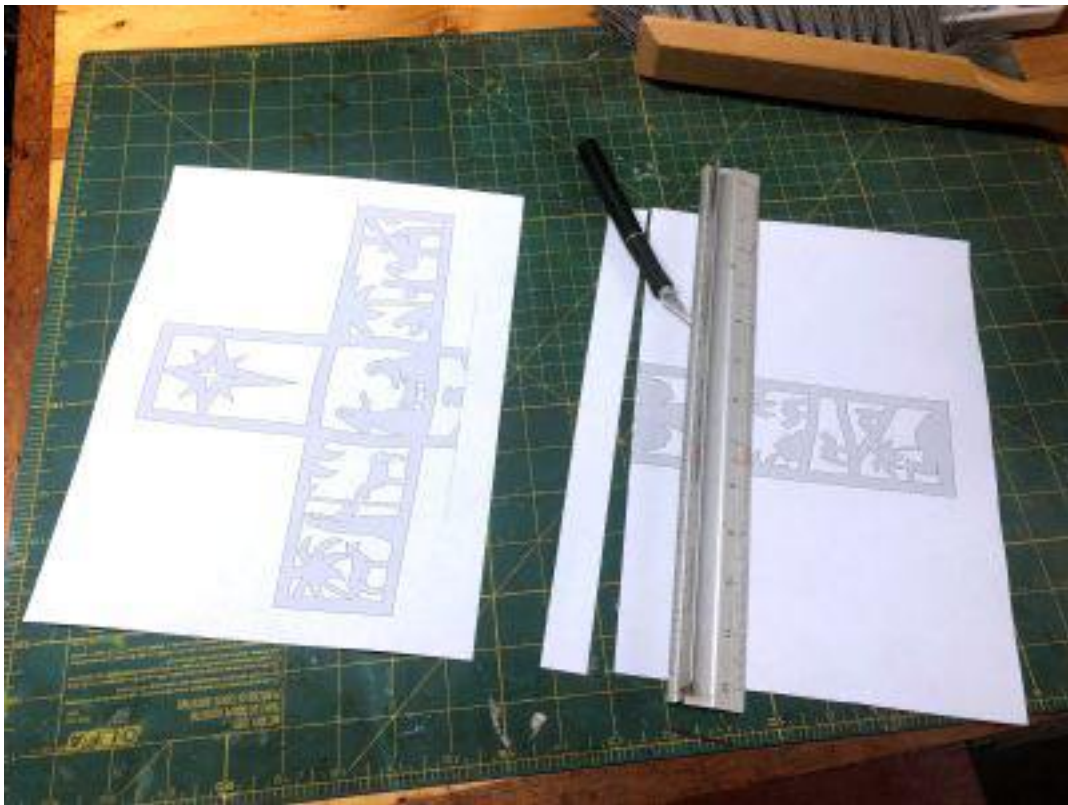
▶ More Options

Christmas Nativity Cross



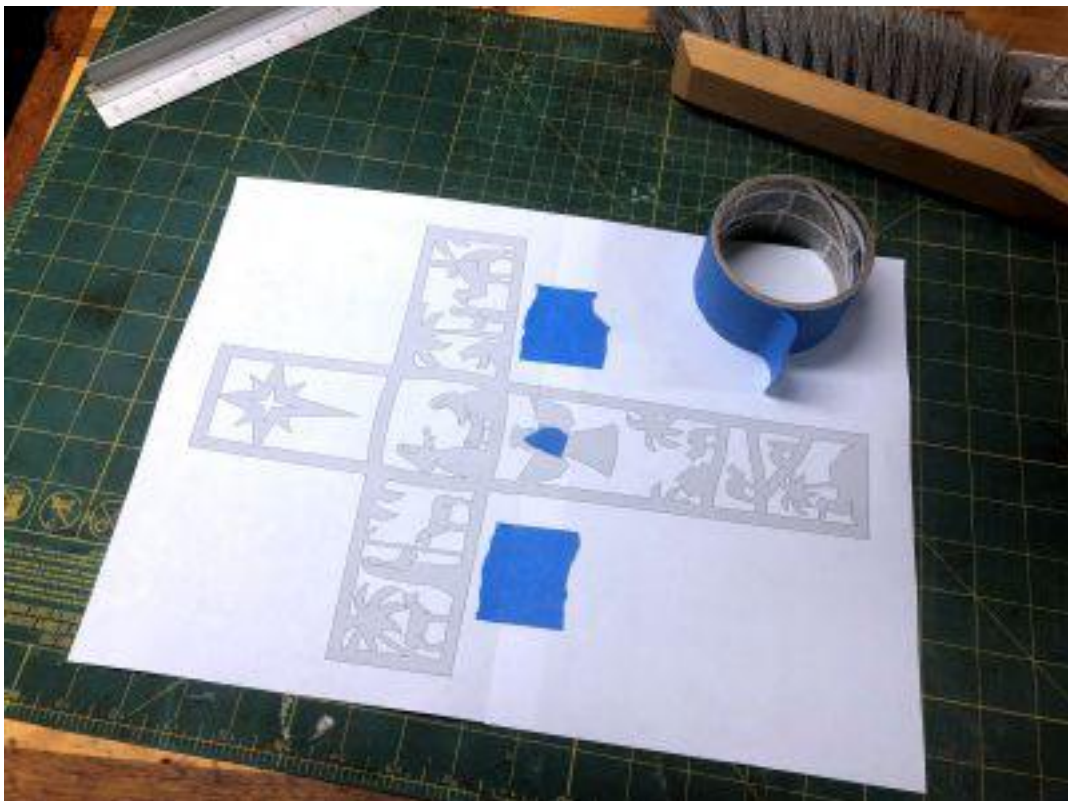


The lines on the figures are called veining. They are cut with the blade. Just cut to the end of the vein then back the blade out. Keep the saw running as you back the blade out.



If you are cutting the large version you will need to cut and tape the sheets together. Only cut one sheet.

Overlap the sheets and apply tape to hold them together.





The larger pattern is easier to cut if you get the pattern and board cut down as small as possible.

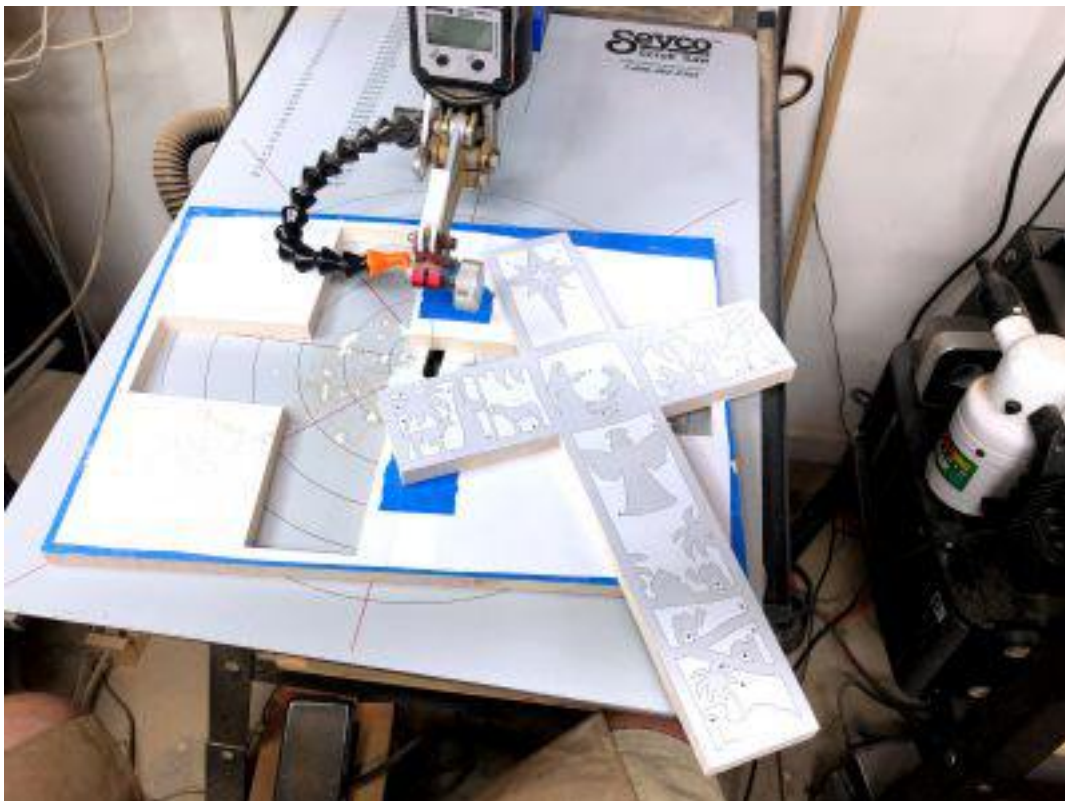
When you use the spray glue on the back of the pattern hold the back sheet up and get glue on the seam. This helps prevent pattern lifting.





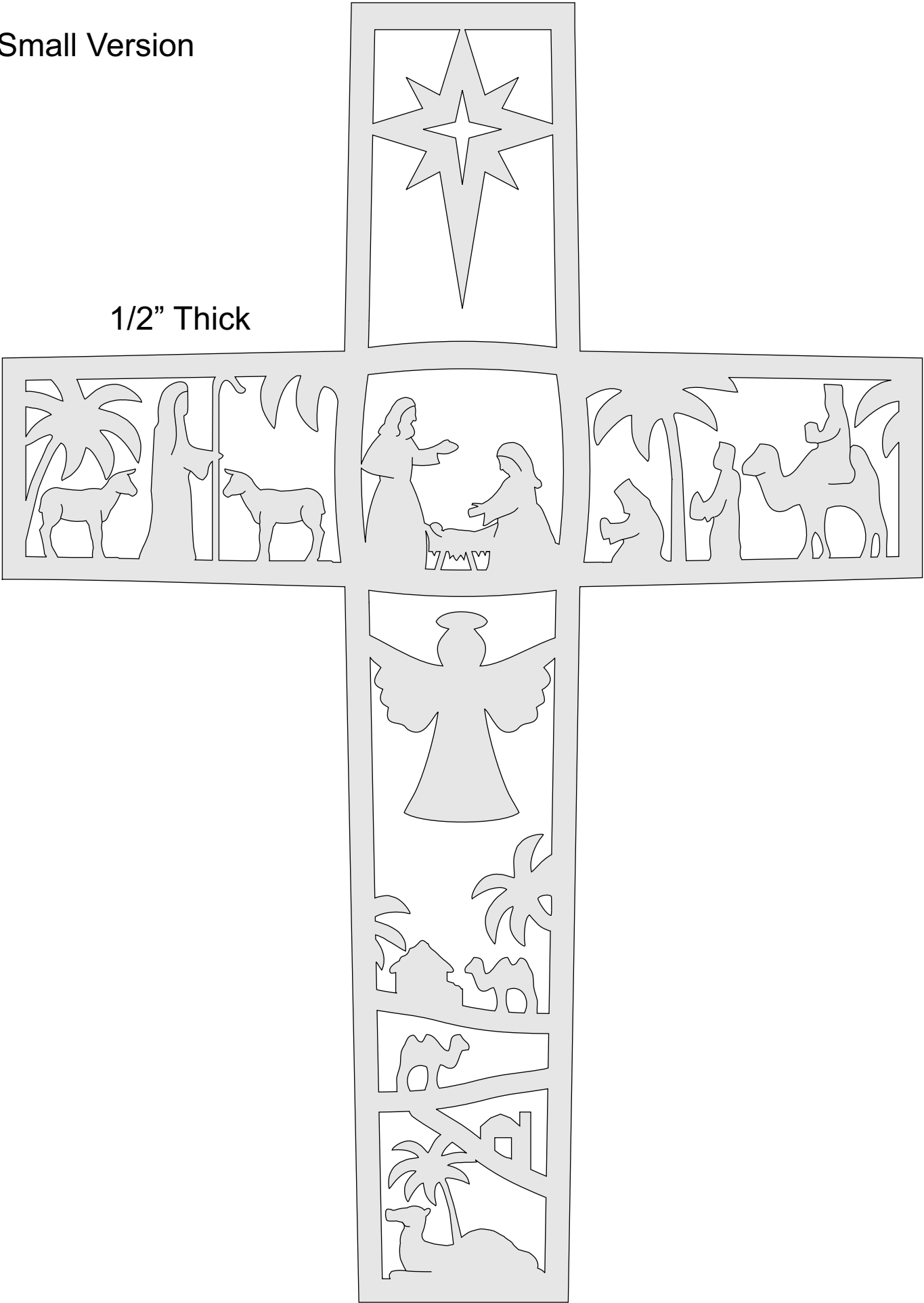
It is unusual to cut the exterior cut first but in this case it makes the large board easier to handle on the scroll saw table.

Now you can complete the interior cuts.



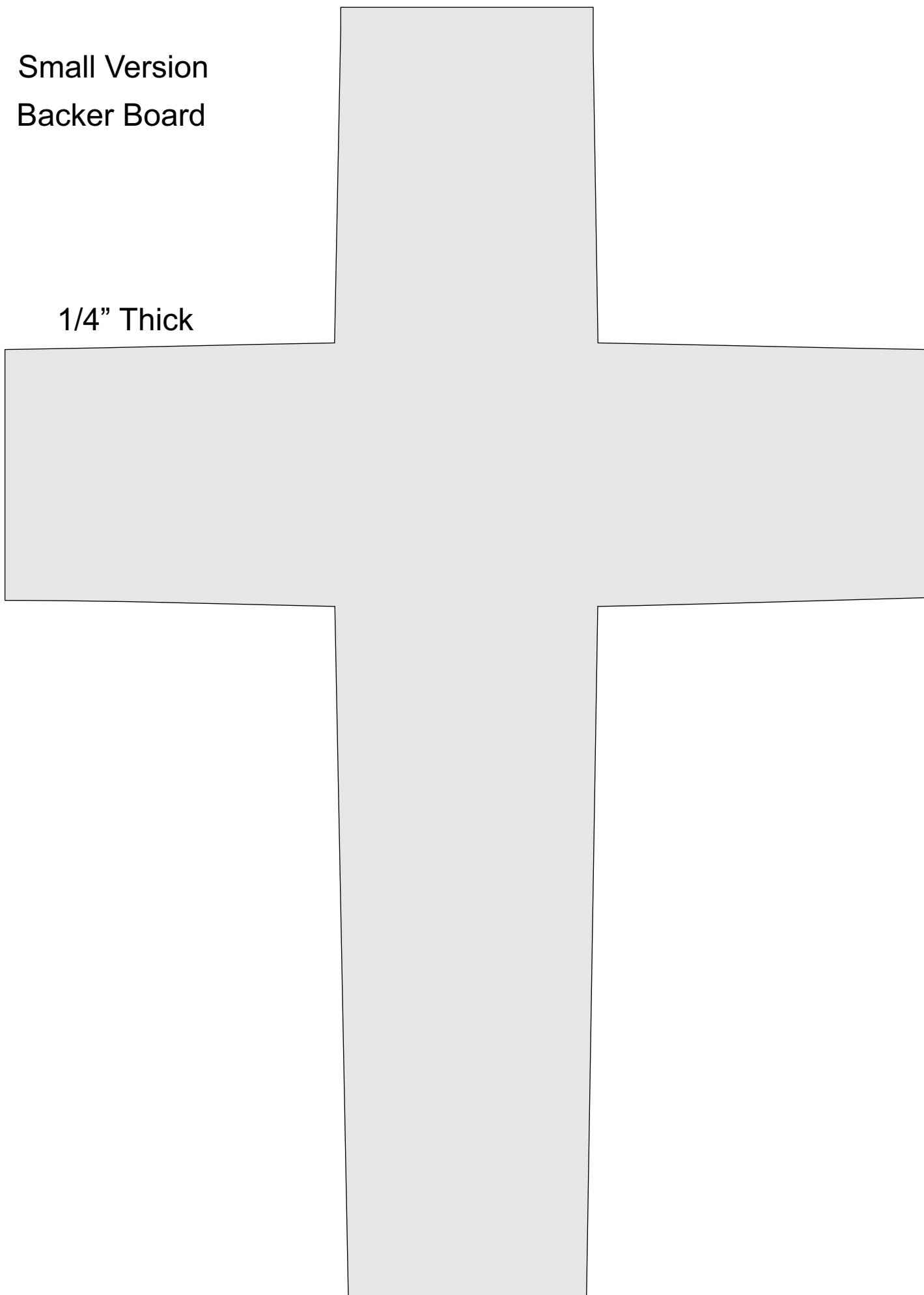
Small Version

1/2" Thick



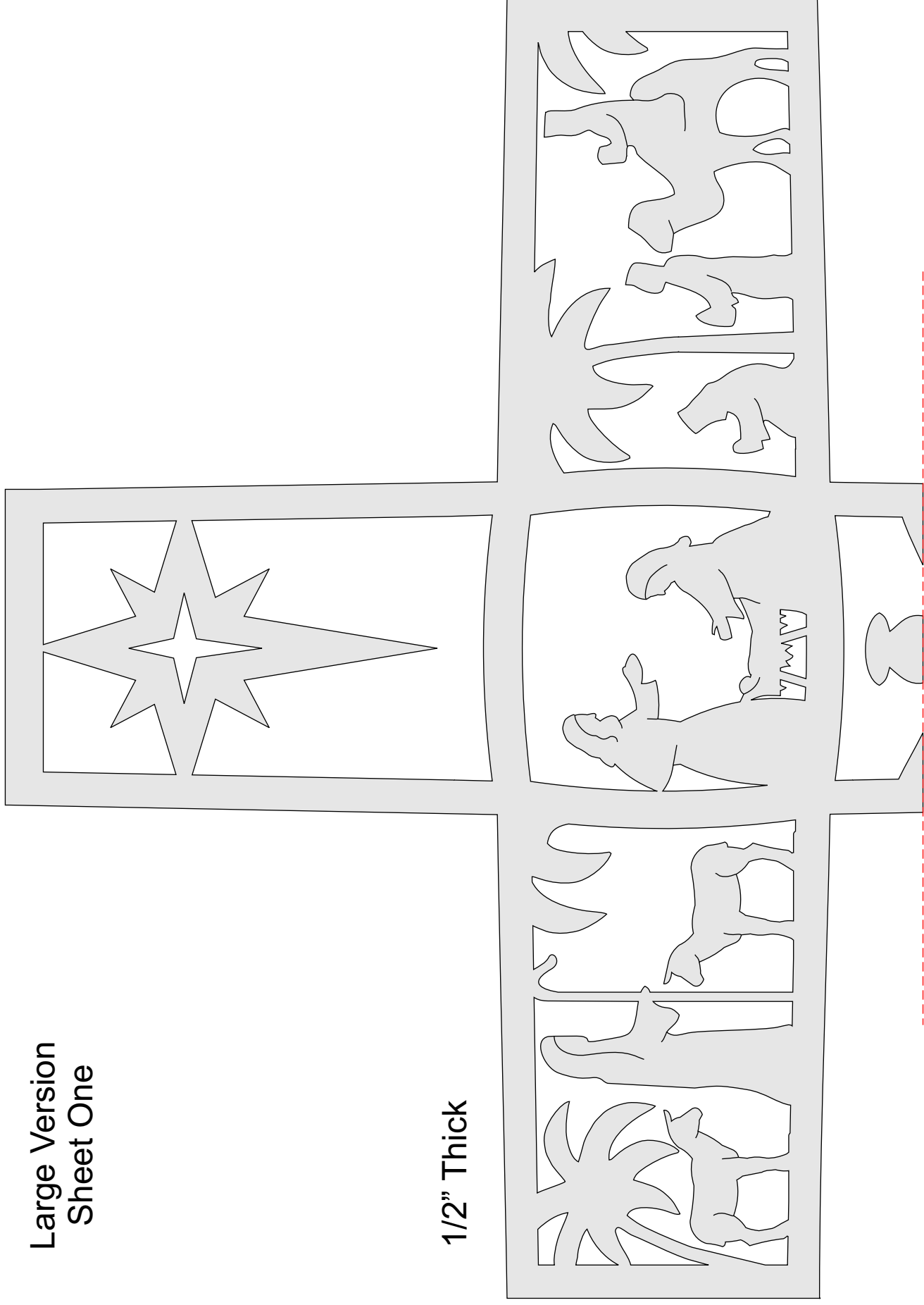
Small Version
Backer Board

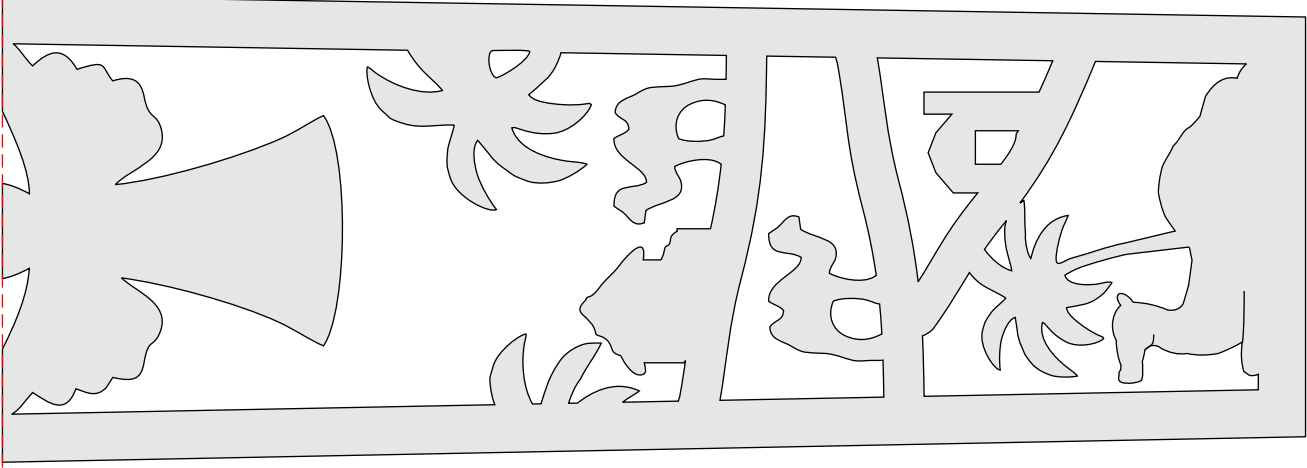
1/4" Thick



Large Version
Sheet One

1/2" Thick

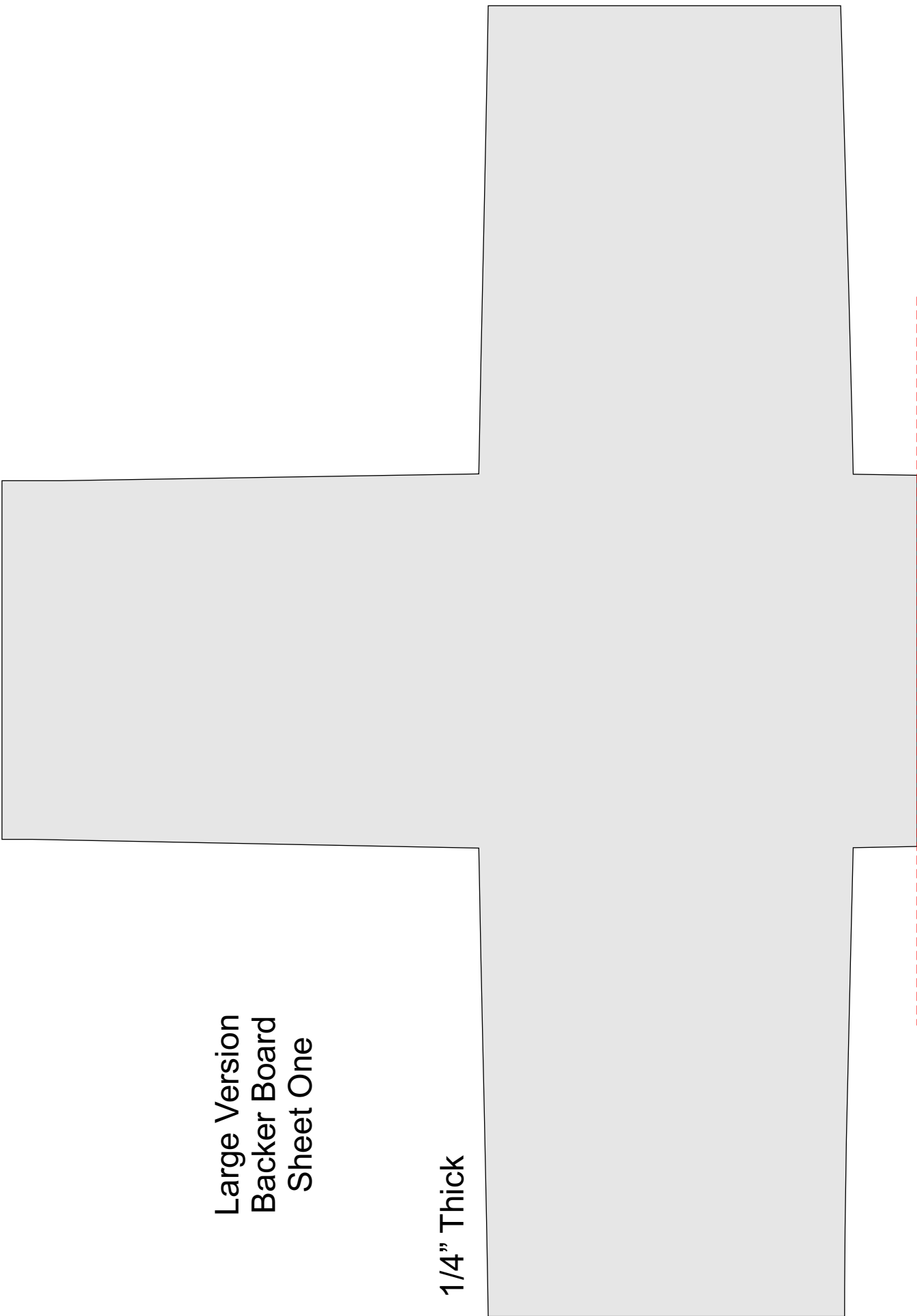




Large Version
Sheet Two

Large Version
Backer Board
Sheet One

1/4" Thick



Large Version
Backer Board
Sheet Two

