

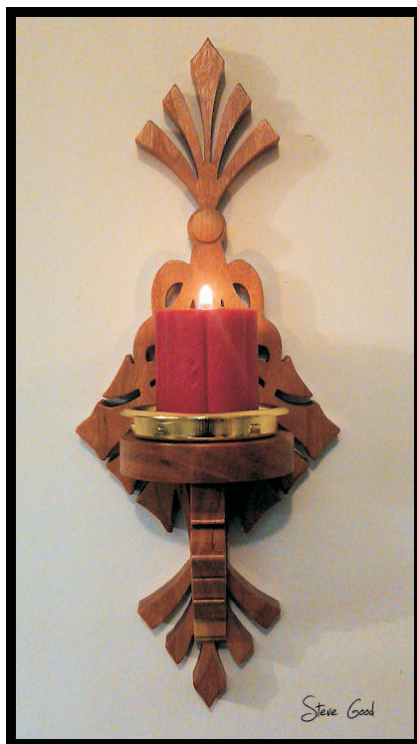


# Digital Patterns

Designed by  
Steve Good

[www.scrollsawworkshop.blogspot.com](http://www.scrollsawworkshop.blogspot.com)

Home of Scroll Saw Pattern Printer  
and the Scroll Saw Key Chain Printer



Note to commercial print employees: I give my permission to print as many of this pattern book as your customer requires.

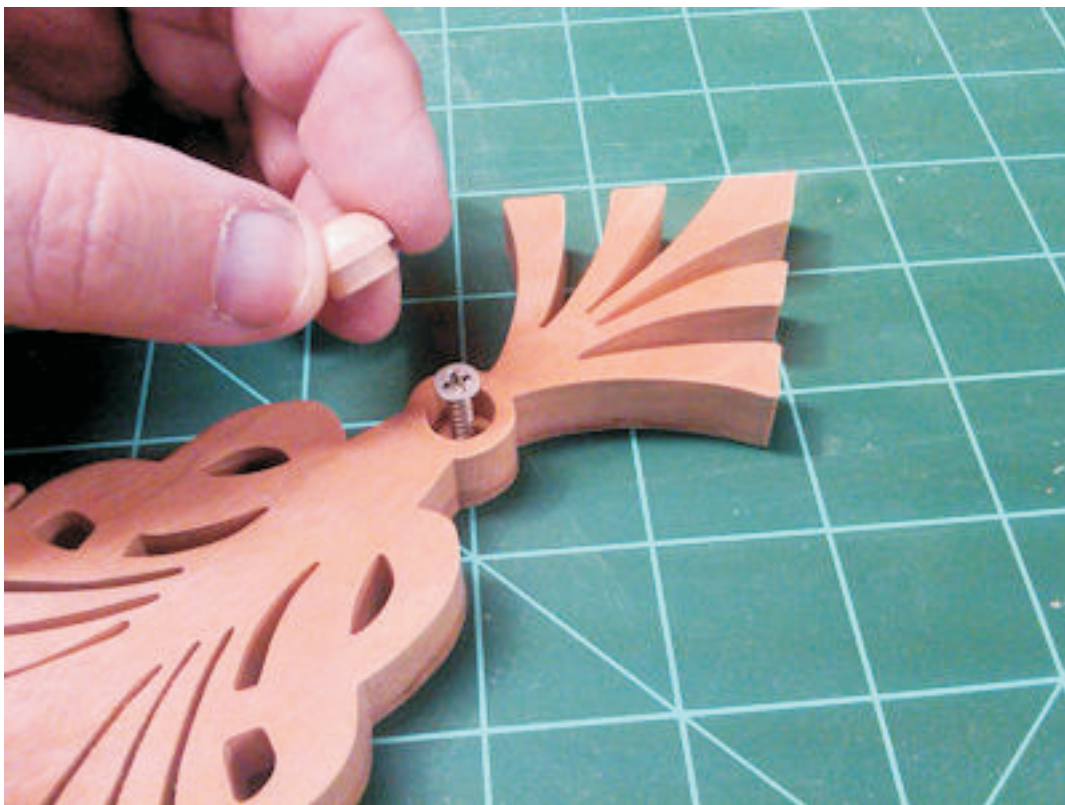


Steve Good





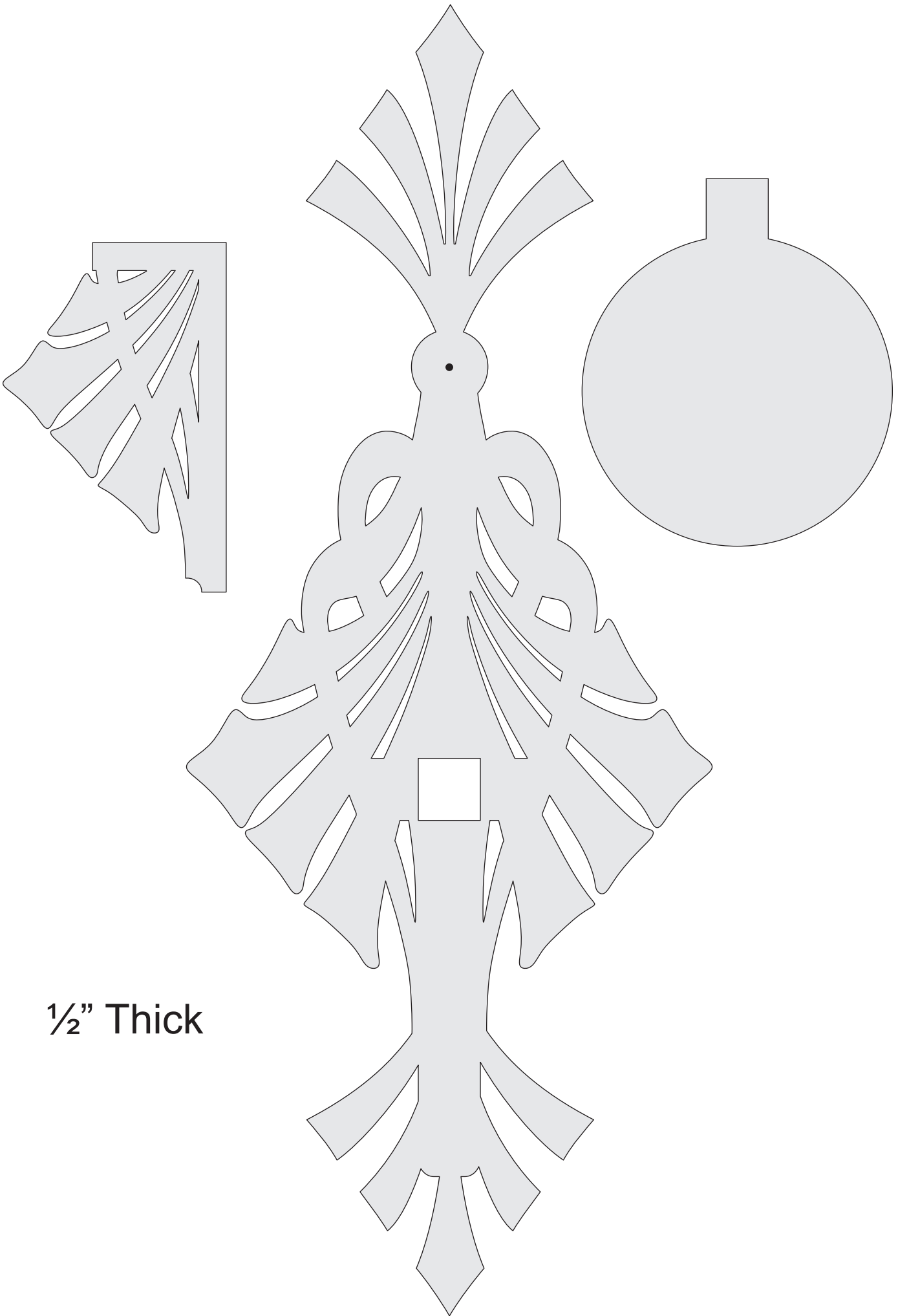
Steve Good



Countersink the screw and use a button or plug to hide the head.



I used a cabinet door handle insert for the tray. I cut the head off a nail and sharpened the end to hold the candle secure.



1/2" Thick